

ColdVision Back Lights

for ColdVision light sources



SCHOTT ColdVision Back Lights can be used to create a crisp edge definition or soft, diffuse incident light for a range of applications with limited space. Those applications include glass inspection, edge detection, photography and instrumentation display.

Features:

- All units come with a protective IR filter.
- The back light housing is made of rugged, black anodized aluminum.
- The fiber bundle is protected with flexible PVC covered metal tubing.
- Dual and quad backlights increase lighting versatility.

Advantages:

- Compact, low profile housing fits in small spaces.
- The white acrylic diffuser plate and calibration process provides the optimum combination of uniformity and intensity.

Single and Dual Back Lights

Description	Single Back Light				Dual Back Light	
Part No.	A08920	A08923*	A08925	A08927	A08922*	A08926
Housing Dimensions (A, B, C)	4" x 2.6" x .59" (102 x 66 x 14.9mm)	6" x 3.5" x .75" (152 x 89 x 16mm)	9" x 5" x .78" (229 x 127 x 19.7mm)	12" x 9" x 1" (305 x 229 x 25.4mm)	4" x 2.6" x .59" (102 x 66 x 14.9mm)	9" x 5" x .78" (229 x 127 x 19.7mm)
Active Area (D)	2" x 2" (51 x 51mm)	3" x 3" (76 x 76mm)	4" x 4.88" (102 x 124mm)	8" x 8" (203 x 203mm)	2" x 2" (51 x 51mm)	4" x 4.88" (102 x 124)
Overall Bundle Length (E)	40" (1016mm)				42" (1067mm)	37" (940mm)
Common Bundle Length (F)	N/A	N/A	N/A	N/A	10" (254mm)	10" (254mm)
Active Input Diameter (G)	.28" (7.0mm)	.32" (8.1mm)	.39" (9.9mm)	.55" (13.97mm)	.39" (9.9mm)	.55" (13.97mm)
Ferrule Diameter (H)	.87" (22.1mm)			.87" (22.1mm)	.87" (22.1mm)	.98" (24.9)
Coupler Diameter (I)	N/A	N/A	N/A	N/A	1.38" (34.9mm)	1.50" (38.1mm)
Tubing Diameter (J, K)	.47" (12mm)	.60" (15mm)	.68" (17.3mm)	.83"(21 mm)	.47"/.67" (12/17mm)	.68"/.83" (17/21mm)
Bend Radius	.6" (15mm)	1" (25mm)		.6" (15mm)	.6"/1.2" (15/30mm)	1/1.5" (25/38mm)
Gray Scales ¹	±13			±15	±13	±13

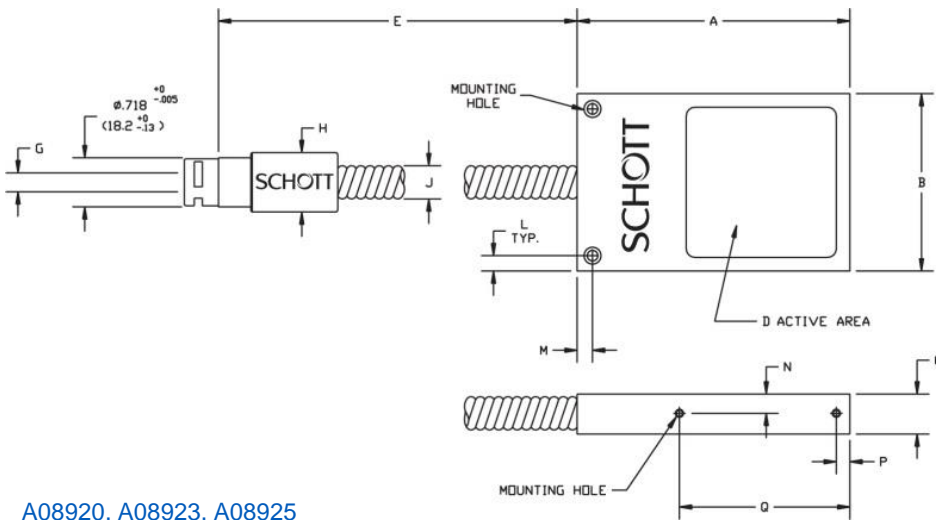
* Made-to-order products

¹ Uniformity scans are available upon request

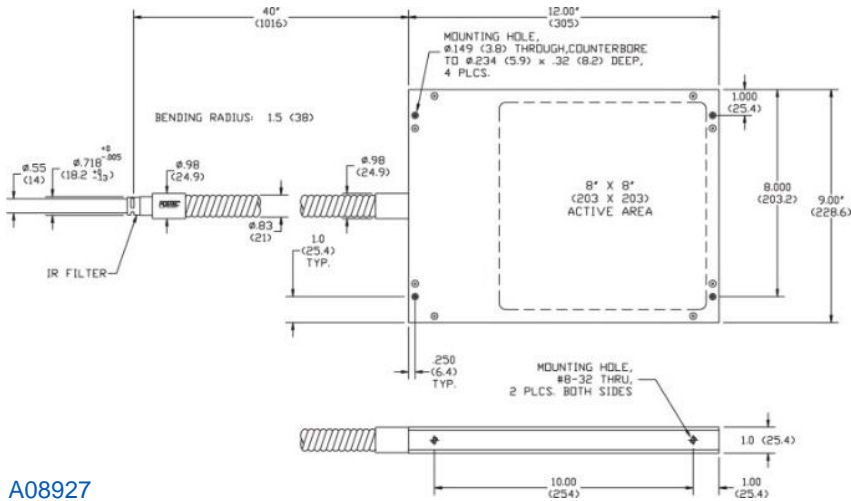
Custom configurations available. Compatible accessories available. See ColdVision-Accessories data sheet.



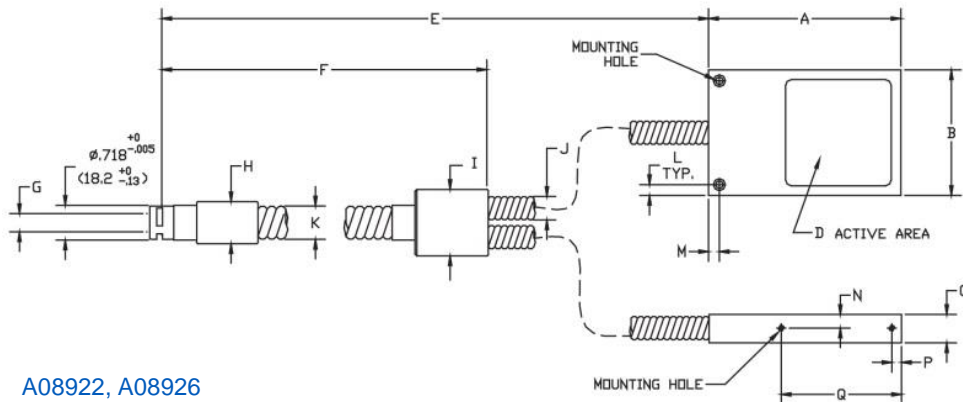
Single and Dual Backlight: Dimensions



A08920, A08923, A08925



A08927



A08922, A08926

Warning : This product is manufactured with glass fiber. Not for use in cable/hose carrier. Call SCHOTT to discuss moving cable/hose carrier applications.

All specifications are subject to change without prior notice. This datasheet or any extracts thereof may only be used in other publications with express permission of SCHOTT. © SCHOTT AG

Lighting and Imaging
SCHOTT AG
 Hattenbergstrasse 10
 55122 Mainz
 Germany
 Phone: +49 (0) 6131/66-7796
 Fax: +49 (0) 6131/66-7850
 lightingimaging@schott.com
 www.schott.com/coldvision

Dimensions in () are in mm

SCHOTT
 glass made of ideas