

Product Range

Couplings



SCHOTT tool kit



Open Standard Coupling



Open Standard Slim Coupling

Specially developed for tubular photobioreactors:
The couplings are designed for SCHOTT glass tubes with plain tube ends according to the product range shown in this brochure.



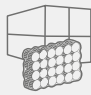

- Successfully tested for 10 years lifetime regarding
 - 3 bar pressure resistance
 - UV-resistance
 - Regular cleaning cycles with various chemicals
- Fast installation allowing for reduced built up time of the reactor
- Easy to disassemble and re-use allowing for fast modification or extension of a reactor system
- Easy handling with pre-assembled devices and a special tool kit including a torque wrench
- Food grade

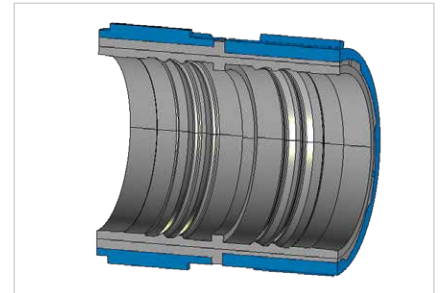


Note

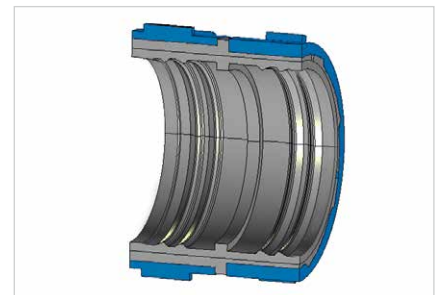
A special tutorial you get on request. Please follow the link or QR code to watch our tutorial video.

<http://www.us.schott.com/pbr-tutorial>

Item No.	Outside Diameter Tube on Side 1	Outside Diameter Tube on Side 2	Package	Description	Package
					
	mm in	mm in	Number of Couplings		Weight approx. kg approx. lb
1530116	54 2.13	54 2.13	24 bag	Standard ⁽¹⁾	6.9 15.3
			960 pallet		277.7 612.2
1581056*	54 2.13	54 2.13	24 bag	Standard Slim ⁽²⁾	5.6 15.3
			1824 pallet		224.6 612.2
1463260	65 2.56	65 2.56	24 bag	Standard ⁽¹⁾	6.1 13.4
			960 pallet		219.4 483.7
1581035	65 2.56	65 2.56	24 bag	Standard Slim ⁽²⁾	5.9 13.4
			1824 pallet		236.2 483.7



(1) Standard, length 80 mm
With partition wall to assure glass separation and smooth transition



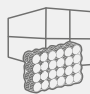



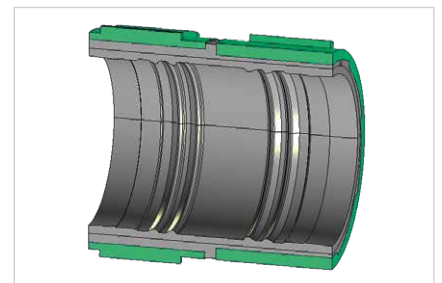
(2) Standard Slim, length 45 mm

Toolbox 54 with torque wrench for closing of coupling and tools for opening
Toolbox 65 with torque wrench for closing of coupling and tools for opening

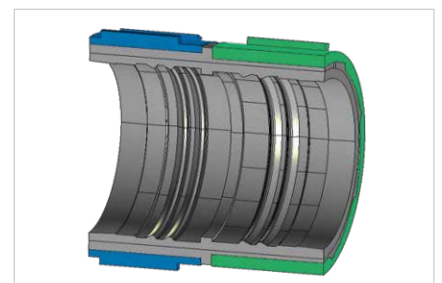
* available in 2018

Additional Equipment

Item No.	Outside Diameter Tube on Side 1	Outside Diameter Tube on Side 2	Package	Description	Package
					
	mm in	mm in	Number of Couplings		Weight approx. kg approx. lb
1530120	54 2.13	54 2.13	4 carton	Maintenance kit (no partition wall) ⁽³⁾	0.9 2.0
			576 pallet		
1530105	65 2.56	65 2.56	4 carton	Maintenance kit (no partition wall) ⁽³⁾	1.0 2.2
			576 pallet		
1534828	65 2.56	63.5 2.50	4 carton	Adapter ⁽⁴⁾	1.0 2.2
			576 pallet		



(3) Maintenance, length 80 mm
Allows easy exchange of tubes, no partition wall



(4) Adapter, length 80 mm
Allows connection to periphery tubes with 2.5 inch outer diameter