

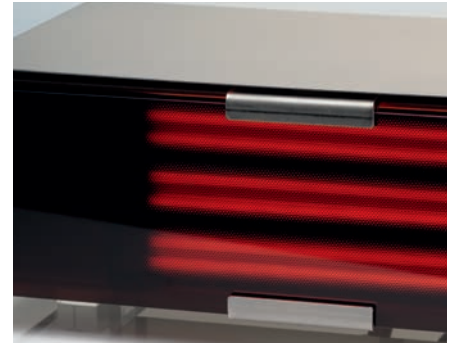
# SCHOTT NEXTREMA® 712-3 – tinted

Black design and excellent heat output

NEXTREMA® 712-3 delivers a black design that fits into basically every environment, hiding the heating elements when switched off. When the heater is powered on the excellent transmission for radiant heat ensures a high heat output at minimal glare.

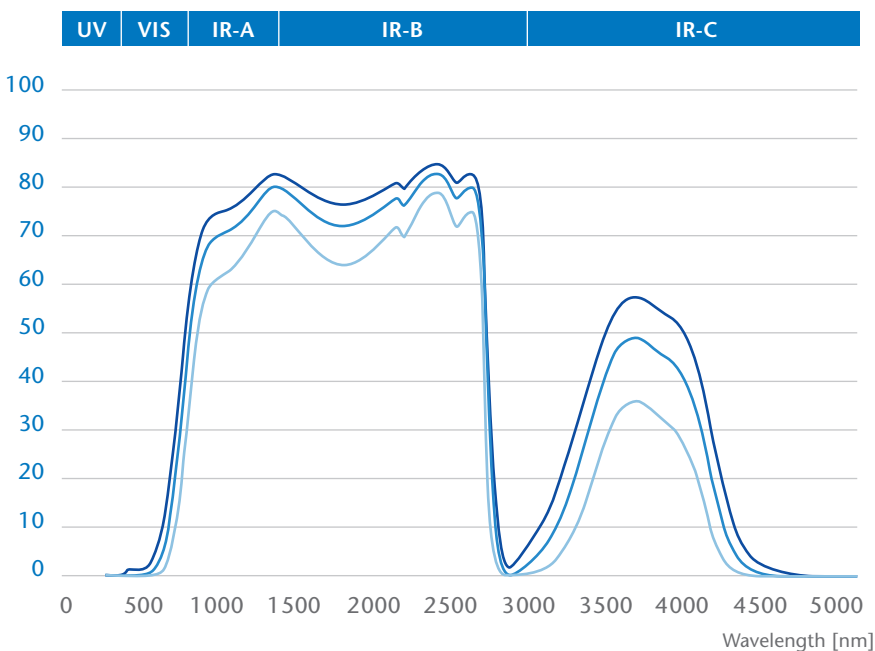
## Material benefits

- High transmission in the IR-A and IR-B range
- Black design
- Hides the heating element when switched off



## Overlay of NEXTREMA® transmission with heating element emission spectra

### Transmission [%]



### NEXTREMA® transmission curves

- NEXTREMA® 712-3  
Thickness: approx. 3 mm
- NEXTREMA® 712-3  
Thickness: approx. 4 mm
- NEXTREMA® 712-3  
Thickness: approx. 6 mm

\*Transmission graphs are based on data from individual measurements. Deviations may result from manufacturing process.

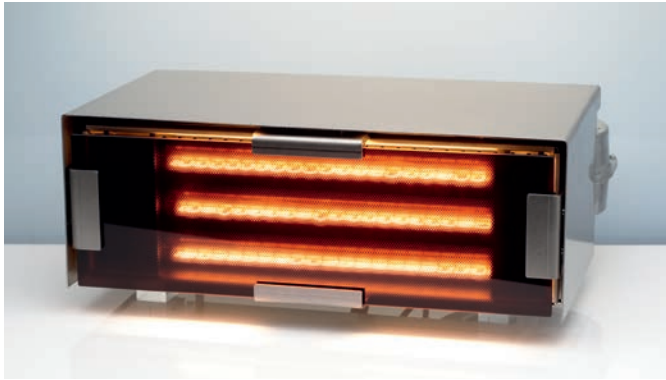
Material data sheets are available for download at:  
[www.schott.com/nextrema](http://www.schott.com/nextrema)

**SCHOTT**  
glass made of ideas

# SCHOTT NEXTREMA® 712-3 – tinted

Appearance in combination with different heating elements

## Short wave emitter



Short wave emitter & 712-3 – day view

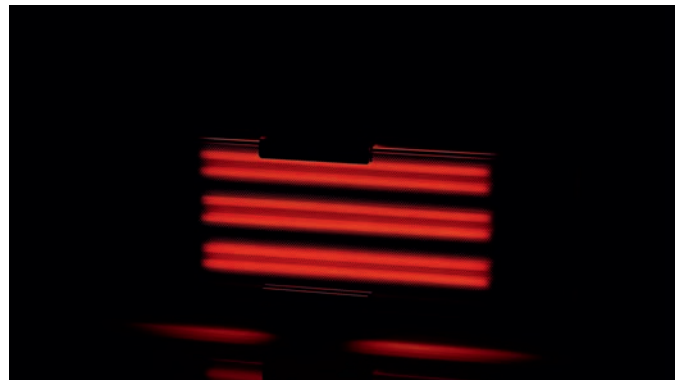


Short wave emitter & 712-3 – night view

## Carbon emitter



Carbon emitter & 712-3 – day view

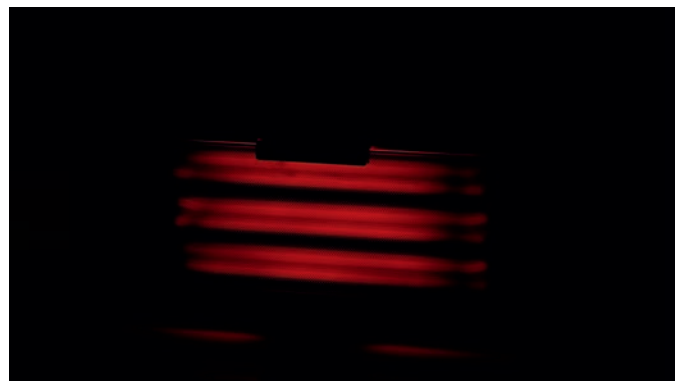


Carbon emitter & 712-3 – night view

## Medium wave emitter



Medium wave emitter & 712-3 – day view



Medium wave emitter & 712-3 – night view



80278 ENGLISH 03/2017 all/nino Printed in Germany

Home Tech  
SCHOTT AG  
Hattenbergstrasse 10  
55122 Mainz  
Germany  
Phone: +49 (0)6131/66-25431  
Fax: +49 (0)3641/28889162  
info.nextrema@schott.com

[www.schott.com/nextrema](http://www.schott.com/nextrema)

**SCHOTT**  
glass made of ideas