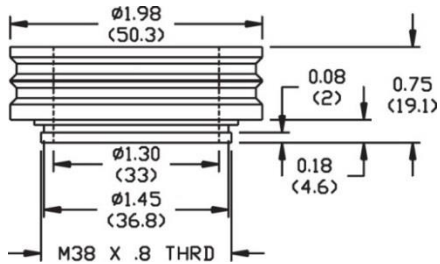
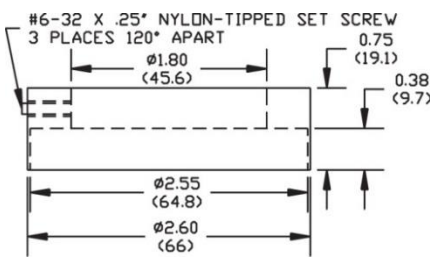


# Ringlight to Microscope Adapters

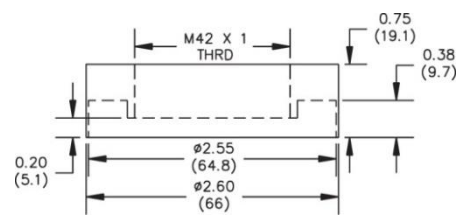
**A08606**



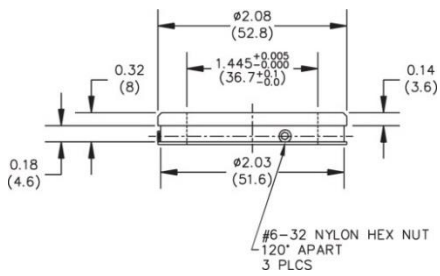
**A08607**



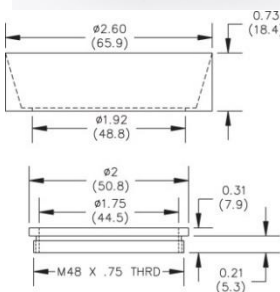
**A08608**



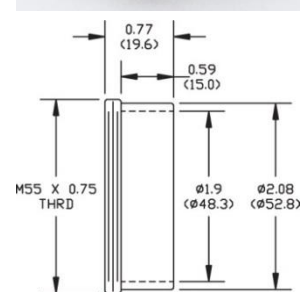
**A08609**



**A08626**



**A08628**



## Ringlight Adapters

**Note:**

Adapters are machined to order. Pricing and availability subject to market conditions.

Drawings are available.

Part No.	Ringlight	Microscope	Mounting
A08606	A08600	B&L Zoom 4	Screws into Objective
A08607	A08625	Leica SZ4/SZ6 with auxiliary lens	Three Thumbscrews
A08608	A08625	Leica SZ4/SZ6 without auxiliary lens	Screws into objective
A08609	A08630	Leica SZ7	#6 - 32 Hex Set Screw
A08626	A08625	Olympus SZ	Screw-on Retaining Ring
A08628	A08600, A08620	SMZ 645/660	Screws on Objective

Dimensions in ( ) are in mm

All specifications are subject to change without prior notice. This datasheet or any extracts thereof may only be used in other publications with express permission of SCHOTT. © SCHOTT AG

Lighting and Imaging  
**SCHOTT AG**  
 Hattenbergstrasse 10  
 55122 Mainz  
 Germany  
 Phone: +49 (0) 6131/66-7796  
 Fax: +49 (0) 6131/66-7850  
 lightingimaging@schott.com  
 www.schott.com/lightingimaging

