

# Single and Dual Goosenecks

Flexible obedient, incident illumination for space constrained applications.



Single Chrome Gooseneck, A08400



Dual Black Gooseneck, A08575

Bundle Input: Black Anodized Aluminium  
 Bundle Sheathing: Chrome or Black Decabon

## Product and Performance Characteristics

- Made with chrome plated semi-obedient metal or black decabon semi-rigid gooseneck tubing
- Easily adjustable, precise positioning offers complete control of light placement
- Dual models illuminate workspace with a single light source
- Gooseneck legs placed in opposing positions create near shadow-free illumination
- Standard output ferrules accept spot lenses and polarizing caps (See the Accessories section)
- Model number A08575 is a dual focusing gooseneck that has permanently attached spot lenses, easily focused by turning the knurled lens barrels
- Modified standard and custom configurations are available

## Single Gooseneck Specifications

Part No.	Tubing	Distal Ferrule Diameter	Active Input Fiber Diameter	Gooseneck Tubing Diameter	Gooseneck Length
A08400	Chrome	.20" (5)	.393" (10)	.47" (12)	18" (457)
A08410	Black	.20" (5)	.393" (10)	.47" (12)	30" (762)

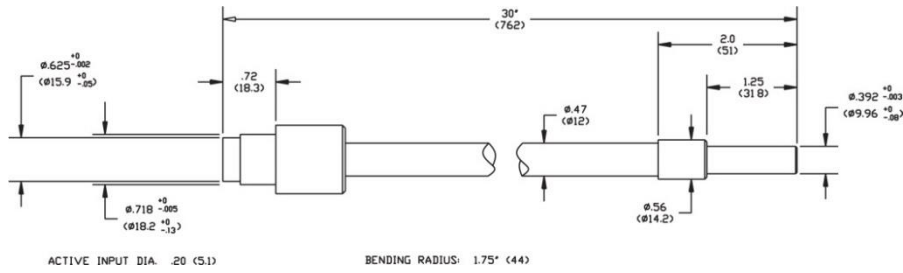
## Dual Gooseneck Specifications

Part No.	Tubing	Distal Ferrule Diameter	Active Input Fiber Diameter	Gooseneck Tubing Diameter	Gooseneck Length
A08500	Chrome	.30" (8)	.393" (10)	.47" (12)	18" (457)
A08575	Black	.30" (8)	.21" (5)	.47" (12)	23" (584)

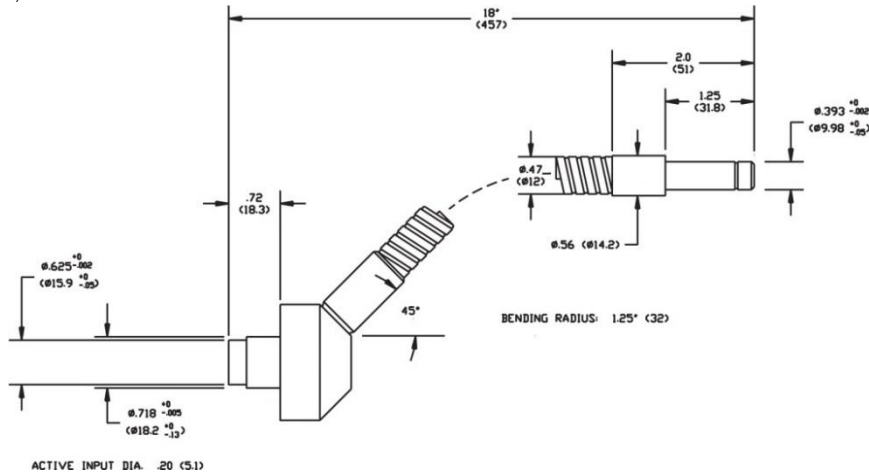
Dimensions in ( ) are in mm



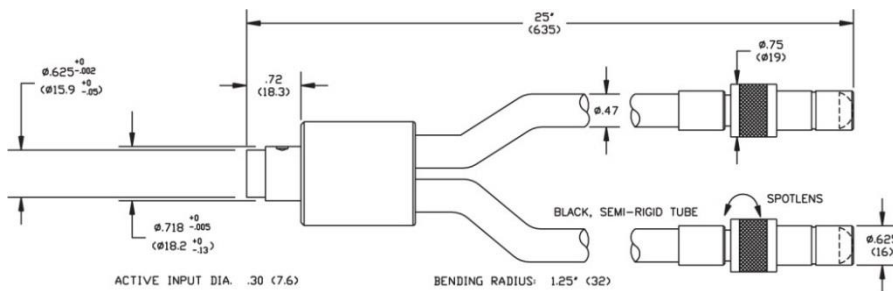
## Gooseneck Specifications



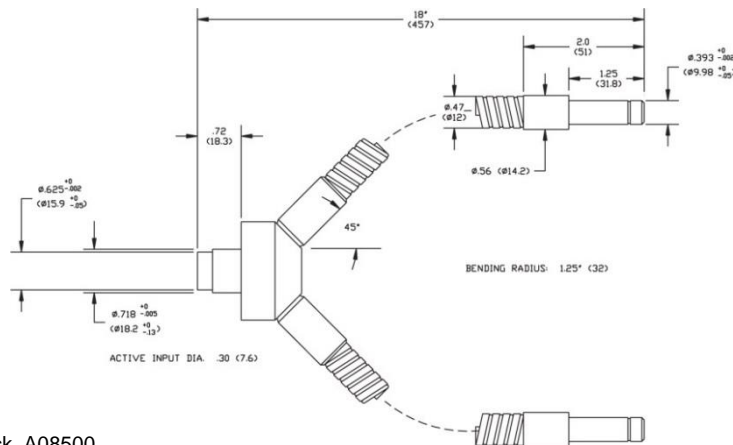
Single Black Gooseneck, A08410



Single Chrome Gooseneck, A08400



Dual Black Gooseneck, A08575



Dimensions in ( ) are in mm

**Warning :** This product is manufactured with glass fiber. Not for use in cable/hose carrier. Call SCHOTT to discuss moving cable/hose carrier applications.

Dual Chrome Gooseneck, A08500

All specifications are subject to change without prior notice. This datasheet or any extracts thereof may only be used in other publications with express permission of SCHOTT. © SCHOTT AG

Lighting and Imaging  
**SCHOTT AG**  
 Hattenbergstrasse 10  
 55122 Mainz  
 Germany  
 Phone: +49 (0) 6131/66-7796  
 Fax: +49 (0) 6131/66-7850  
 lightingimaging@schott.com  
 www.schott.com/lightingimaging

