

Gooseneck Light Guides



Gooseneck light guide



Gooseneck light guide bifurcated



Combi light guide bifurcated

Features

- Flex and stay light guides.
- Part No. 170.402 with additional 800 mm flexible arm
- Black lacquered semi-rigid gooseneck tubing.
- Focusing optics with color filter option available.

Benefits

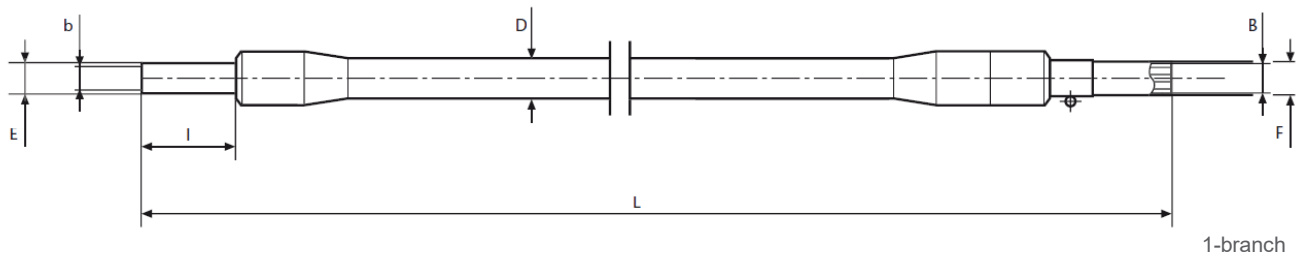
- Precise positioning offers complete control of light placement.
- Gooseneck branches positioned in opposite directions create near shadow-free illumination.
- Re-adjust with ease.
- Dual models illuminate workspace with a single light source.
- Part No. 170.402 can be stationary fixed at the microscope post

Cold light source	Part No.	Type	Length (L)	End tip Ø (E)	End tip length (I)	Active Ø branch (b)	Active Common end Ø (B)	Jacketing material	Outer Ø Jacketing (D)	Light source adapter Ø (F)
KL 300 LED	170 101	1 branch	500 mm 19.69"	6 mm 0.24"	20 mm 0.79"	3.5 mm 0.14"	5 mm 0.20"	Flex & Stay	11 mm 0.43"	9 mm 0.35"
	170 202	2 branch	500 mm 19.69"	6 mm 0.24"	20 mm 0.79"	3.5 mm 0.14"	5 mm 0.20"	Flex & Stay	11 mm 0.43"	9 mm 0.35"
KL 1600 LED KL 2500 LED KL 1500 HAL KL 2500 LCD**	154 101	1 branch	600 mm 23.62"	6 mm 0.24"	20 mm 0.79"	4.5 mm 0.18"	4.5 mm 0.18"	Flex & Stay	11 mm 0.43"	10 mm 0.39"
	154 202	2 branch	600 mm 23.62"	6 mm 0.24"	20 mm 0.79"	4.5 mm 0.18"	6.4 mm 0.26"	Flex & Stay	11 mm 0.43"	10 mm 0.39"
	154 302	3 branch	600 mm 23.62"	6 mm 0.24"	20 mm 0.79"	4.5 mm 0.18"	7.8 mm 0.31"	Flex & Stay	11 mm 0.43"	10 mm 0.39"
KL 300 LED KL 1600 LED KL 2500 LED KL 1500 HAL KL 2500 LCD**	170402	2 branch plus 1 flexible	(L) 500 mm 19.69" (L*) 800 mm 31.50"	6 mm 0.24"	20 mm 0.79"	4.5 mm 0.18"	6.4 mm 0.26" randomized	Flex & Stay plus M-PVC	(D) 11 mm 0.43" (D*) 14 mm 0.55"	9 mm 0.35" and 10 mm 0.39"

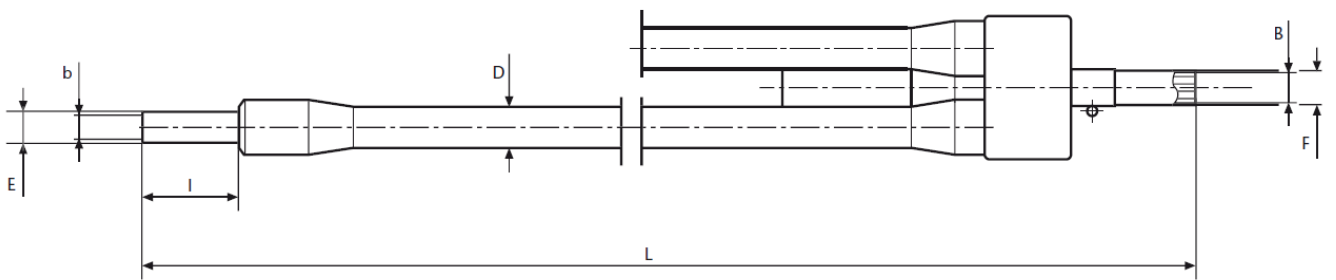
** and discontinued KL 1500 products (KL 1500 compact, KL 1500 LCD, KL 1500 LED, KL 1500 LED Plus)

Version 05.2015

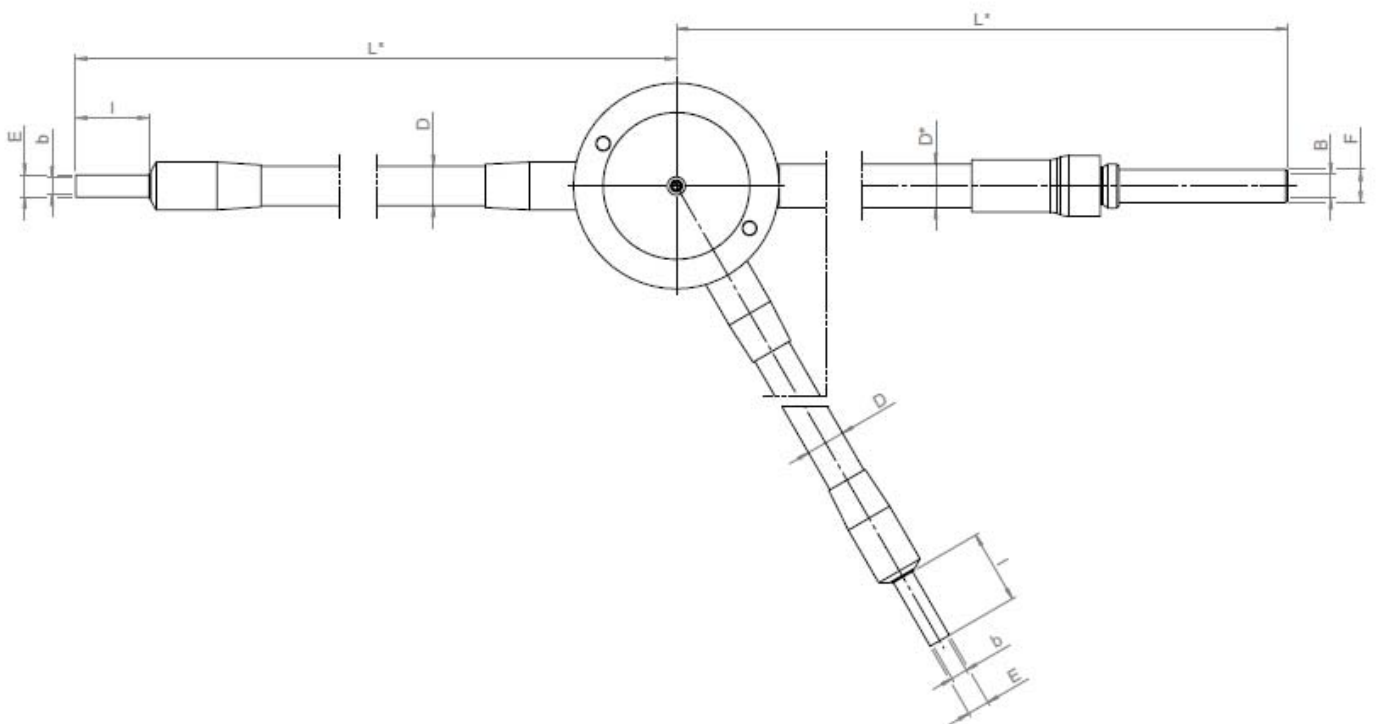
Gooseneck Light Guides



1-branch



2- and 3-branch



2-branch Combi light guide

All specifications are subject to change without prior notice. This datasheet or any extracts thereof may only be used in other publications with express permission of SCHOTT. © SCHOTT AG

Lighting and Imaging
SCHOTT AG
 Hattenbergstrasse 10
 55122 Mainz
 Germany
 Phone: +49 (0) 6131/66-7796
 Fax: +49 (0) 6131/66-7850
 lightingimaging@schott.com
 www.schott.com/lightingimaging

