

# SCHOTT Vitryxx® Bioactive Glass

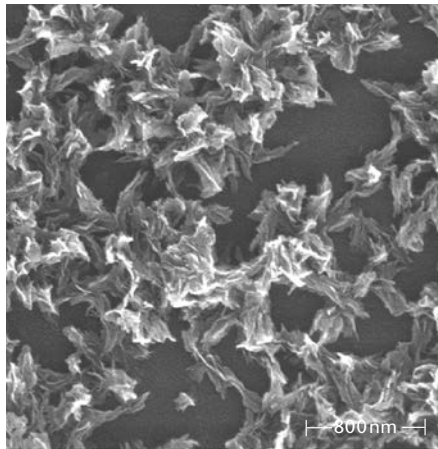
## In Nail Care

Vitryxx® Bioactive Glass is a new mineral enrichment ingredient that can build a mineral layer on keratin surfaces. Used in nail care products, Vitryxx® will help to:

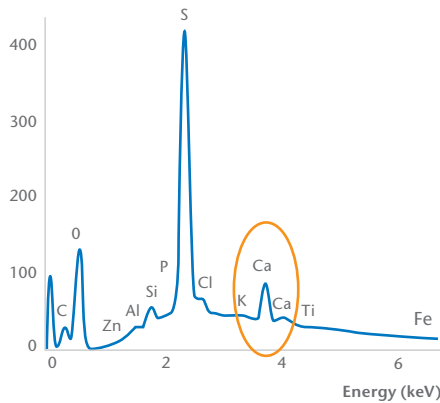
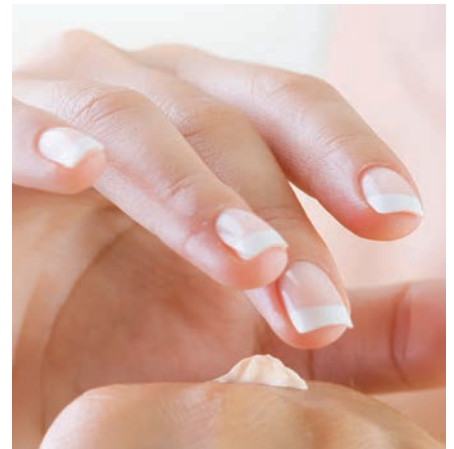
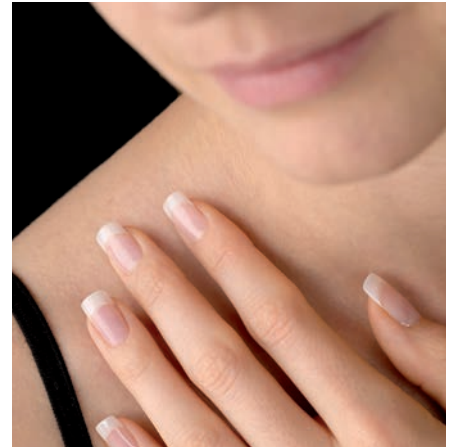
- Strengthen and protect nails
- Smoothen nail ridges
- Reduce chipping of the nail enamel

The mineral enrichment efficacy of Vitryxx® is observed in the results of the following in-vitro studies.

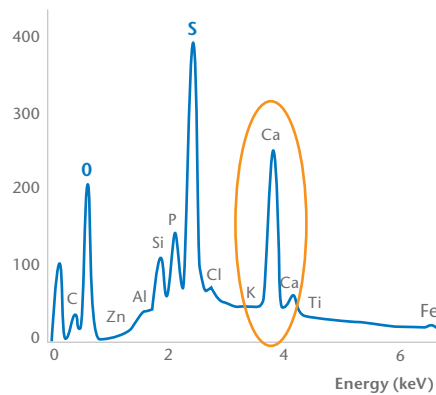
### Tested on a glass slide



This picture shows a glass slide on a 1µm scale. The microscope slide was treated with an aqueous solution of Vitryxx® in tris-buffer in a concentration of 0.15 wt.% for 20 hours.



Nail surface reacted with tris buffer and 100 ppm Calcium

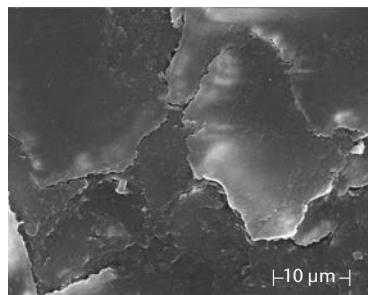


Nail surface reacted with Vitryxx® Bioactive Glass

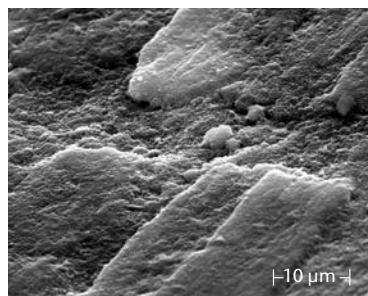
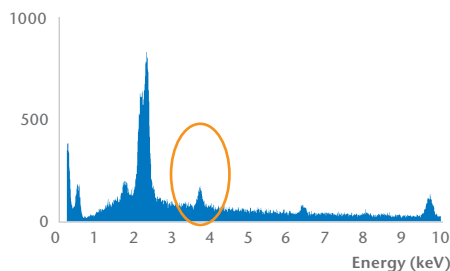
# SCHOTT Vitryxx® Bioactive Glass

In Nail Care

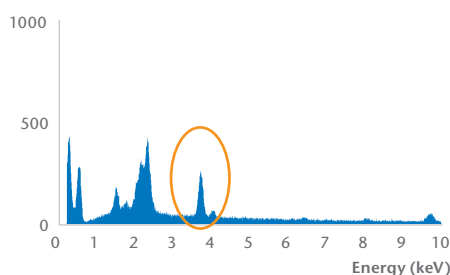
## Tested on a finger nail (Keratin)



untreated



treated



## Vitryxx® Bioactive Glass significantly reduces the chipping and wear of nail enamel

A panel test, showed significantly better scores for enamel wear after seven days on 22 female subjects.

## Formulations and recommendation on LF

Example of nail enamel formulation LF\* 0.15% – 1 mass % Vitryxx®

Phase	Ingredients	Mass [%]
A.	<b>Suspending Lacquer SLF-2</b>	78.00
	Red 7 Lake (4.6% Dispersion in Nitrocellulose Base)	3.00
	<b>Lacquer 127P</b>	14.00
B.	<b>Suspending Lacquer SLF-2</b>	4.00
	<b>SCHOTT Vitryxx® M</b>	1.00
	(Calcium Sodium Phosphosilicate (and) Mica)	

- Procedure:**
- I. Combine all the components in Phase A in an appropriate size vessel.
  - II. Pre-mix Phase B ingredients using high shear.
  - III. Add B to A and continue mixing until batch is uniform.

\*Loading factor depending on formulation

Electronic Packaging  
**SCHOTT AG**  
 Christoph-Dorner-Strasse 29  
 84028 Landshut  
 Germany  
 Phone: +49 (0)871/826-702  
 Fax: +49 (0)3641/28889090  
 info.glass@schott.com

[www.schott.com/epackaging](http://www.schott.com/epackaging)

