

# SCHOTT® HelioJet

Smart LED cabin lighting to replace fluorescent tubes



## The Challenge: A sufficient LED solution to replace fluorescent tubes in cabins

Up until today LED lighting solutions have not been able to satisfactorily replace fluorescent tubes in aircraft cabins. **LED strips**, which consist of a large number of light diodes, show certain **disadvantages**:

- No homogeneous light pattern
- Change of light stability over time
- Lots of maintenance efforts due to a large number of light diodes

## The solution: HelioJet – Smart LED cabin lighting

**HelioJet**, a new and unique LED lighting technology uses only about 20% of light diodes than conventional LED strips. This leads to significant **improvements in performance, reliability, maintenance and costs**:

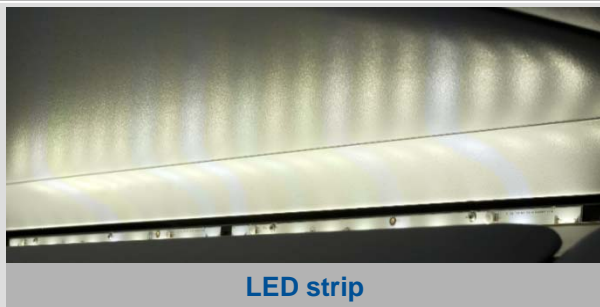
- Homogeneous light pattern– **No “hot LED Spots”, better binning**
- Constant high light stability
- Low maintenance due to much smaller number of LED involved
- Five times higher MTBF (Mean Time Between Failure)

## Product Characteristics



- HelioJet eliminates color shifts from aging LEDs by transforming inhomogeneous light in the optical light converter into homogeneous light pattern.
- The meantime between failure (MTBF) is five times higher which reduces the maintenance efforts substantially.
- It is designed for use in new aircraft as well as for retrofit projects. The modular production concept provides a high compatibility with different aircraft and operating systems.

## Comparison of LED strip and HelioJet



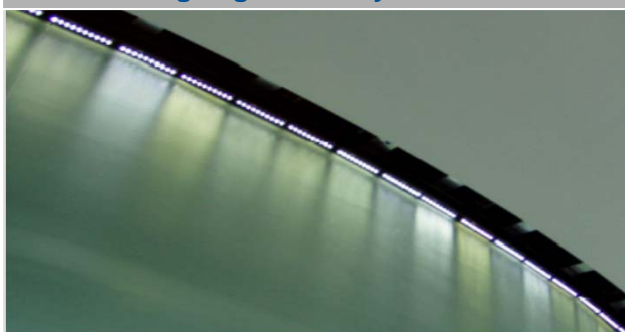
LED strip



HelioJet

- In contrast to current LED strips, HelioJet shows no “hot LED spots” but constant homogeneous light quality with better binning.

## Constant high light stability



LED strip: Change in light stability over time

- An aging LED has a negative influence over its lifetime that results in color shifts as well as the dot effects. The observed result is an inhomogeneous light pattern.
- HelioJet counteracts this by utilizing high quality LEDs and transforming its light inside the optic light converter into a homogeneous pattern.

## Technical Specifications (for 928mm unit)

Illuminance @ 1m distance	> 350 lx (fluorescent tube: 130 lx)
Illuminance of cabin floor	>50 lx ( Airbus single aisle)
Color temperature	Various (typically 4000 K, 5600 K)
Color rendering index	85
Relative MTBF	5 times the MTBF of standard LED strip
Operating voltage	115 VDC, variable frequency
Operating current of LEDs	700 mA max.
Light beam angle	60°
Power consumption	30 W (max.)

## Contact information

Lufthansa Technik AG  
Innovation Business Unit  
Weg beim Jäger 193  
22335 Hamburg, Germany  
Phone :+49-40-5070-2665  
innovation@lht.dlh.de  
www.lufthansa-technik.com/nice  
www.nice-system.com

Lighting and Imaging  
SCHOTT AG  
Otto-Schott-Str. 2  
D-55127 Mainz, Germany  
Phone: +49 (0)6131 / 66-7845  
E-Mail: aviation.info@schott.com  
www.schott.com/aviation

All specifications are subject to change without prior notice.  
This datasheet or any extracts thereof may only be used in  
other publications with express permission of SCHOTT.  
© SCHOTT AG