

D 263® LA Thin Glass

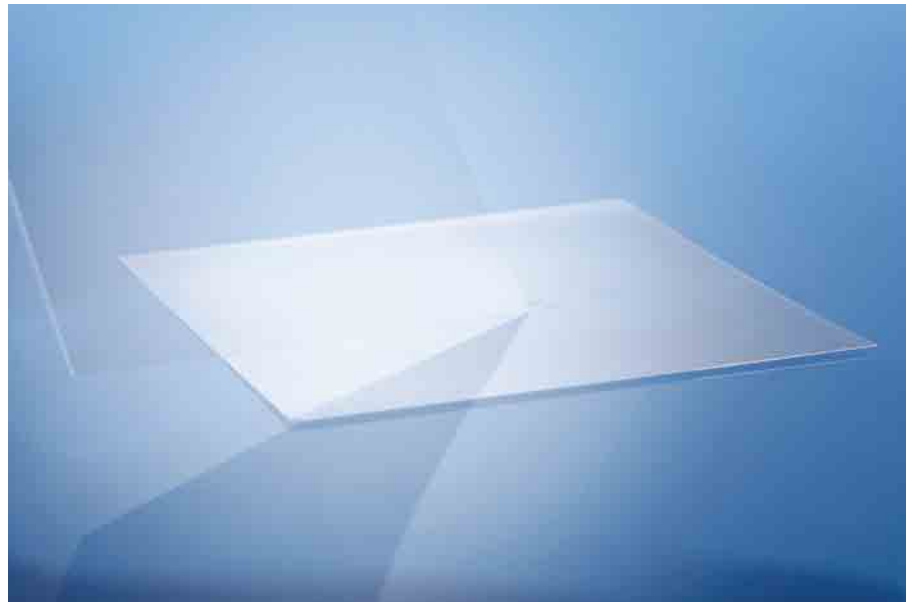
Product Information

D 263® LA eco thin glass (LA = low alpha) is a colorless borosilicate glass. It is the only low-alpha radiation sheet glass available in the market today and is produced by a SCHOTT specific down-draw method.

The usage of the purest raw materials and selected tank materials ensure the very low alpha radiation for D 263® LA eco thin glass.

It is available as sheet glass in thicknesses ranging from 0.1 mm to 1.1 mm.

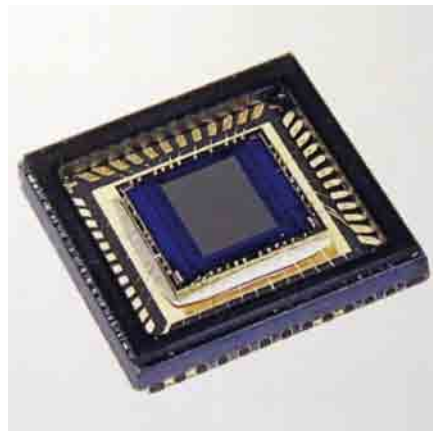
D 263® LA eco thin glass is manufactured with eco-friendly refining agents.



Applications

CCD image sensor packaging

- Low alpha radiation
- High luminous transmittance
- Coefficient of thermal expansion match to ceramic
- Low roughness due to fire-polished surface
- Sheet glass sizes enable 8-inch to 12-inch wafers
- Tight thickness control
- Easy to cut using the scribe and break method



Technical Data

Dimensions	Square and round custom sizes
Thicknesses	0.1 mm up to 1.1 mm
Luminous transmittance τ_{vD65} (d = 1.1 mm)	91.7%
Coefficient of mean linear thermal expansion α (20 °C; 300 °C) (static measurement)	$7.2 \cdot 10^{-6} \text{ K}^{-1}$
Transformation temperature T_g	557 °C
Dielectric constant ϵ_r at 1 MHz	6.7
Refractive index n_D	1.5230
Density ρ (annealed at 40 °C/h)	2.51 g/cm ³
Intensity of α -radiation	< 0.0050 counts (h · cm ²)



Advanced Optics
SCHOTT AG
 Hattenbergstrasse 10
 55122 Mainz
 Germany
 Phone +49 (0)6131/66-1812
 Fax +49 (0)3641/2888-9047
 info.optics@schott.com
www.schott.com/advanced_optics

SCHOTT
 glass made of ideas