



Darkfield ringlight, P/N 400 300  
with adaptor P/N 400 500



Transmitted darkfield light stage, P/N 400 350



Extension adaptors for darkfield ringlight

## VisiLED Darkfield Lighthoods

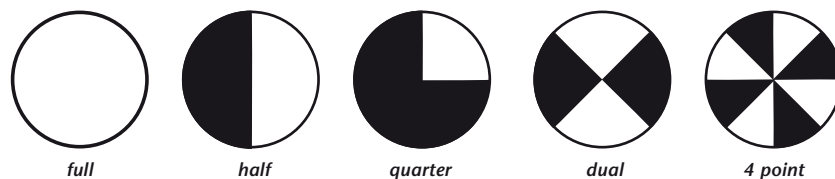
*Illumination system specially developed for stereo microscopy and macroscopy applications*

### Lighthoods for darkfield illumination techniques

- 1 Darkfield ringlight for real incident darkfield.
- 1 Transmitted light stage for transmitted darkfield.

### Features

- Easily adaptable to microscope objectives by means of thumb screw and adaptor rings.
- Homogenous illumination.
- Best white quality: typically 6,000 K.
- Long operating life: typically 50,000 h by actively controlling the LED chip temperature.
- Segments controllable in different preset modes for optimum contrasting:



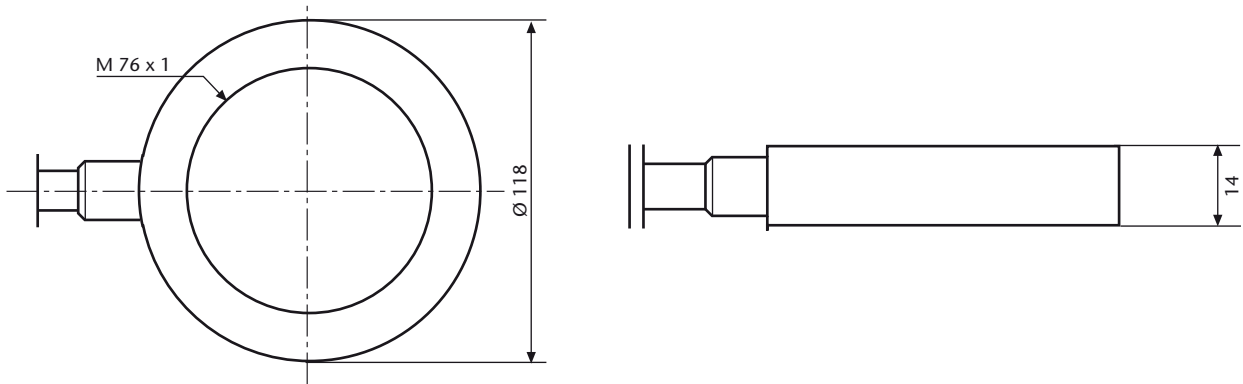
- Manufactured in the EU.

Ringlights and Accessories					
Description	Part No.	Working Distance (WD)	Max. Illuminance	Inner Ø	Outer Ø
LED Darkfield ringlight "S40-10D"	400 300	5-15 mm (0.20"-0.59")	130 klx (10 mm) (0.39")	66 mm (2.60")	118 mm (4.65")
Transmitted darkfield light stage "TLS-DF"	400 350	N/A		active 50 mm (1.97")	84 mm (3.31")

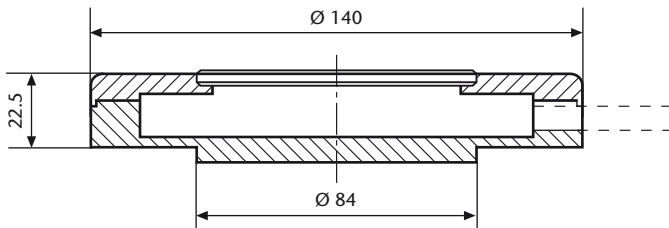
Accessories VisiLED Darkfield Lighthoods	
Description	Part. No.
Combi-Kit to combine one brightfield and the darkfield incident ringlight for mixed illumination techniques	400 500
Darkfield adaptor	400 510

Adapting diameter 66 mm	Length	Part. No.
Extension adaptor for objective working distance 30-50 mm	30 mm	157 569
Extension adaptor for objective working distance 50-80 mm	50 mm	157 567
Extension adaptor for objective working distance 80-110 mm	75 mm	157 562

# VisiLED Darkfield Lightheads



Darkfield ringlight, P/N 400 300



Transmitted darkfield light stage, P/N 400 350

Lighting and Imaging  
**SCHOTT AG**  
Otto-Schott-Strasse 2  
55127 Mainz  
Germany

Phone: +49 (0)6131/66-7796  
Fax: +49 (0)6131/66-7850  
lightingimaging@schott.com  
www.schott.com/lightingimaging

For your local sales contact please visit  
[www.schott.com/lightingimaging/english/contact](http://www.schott.com/lightingimaging/english/contact)

**SCHOTT**  
glass made of ideas