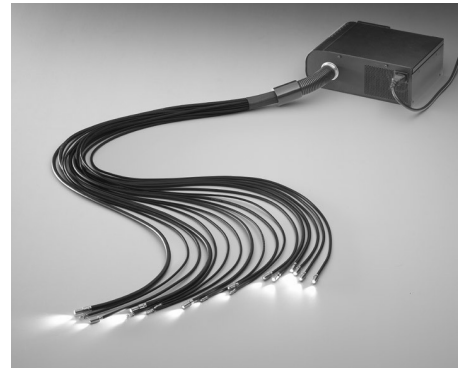


SCHOTT SpectraFlex®-Excel Glass Harnesses

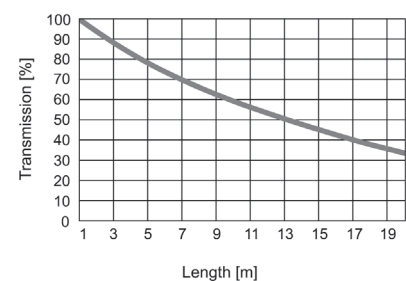
Unique high-temperature resistant fiber optic harnesses

SpectraFlex-Excel represents a new generation of glass fiber optic harnesses from SCHOTT—offering unparalleled light output, outstanding longevity and extraordinary color characteristics. Product benefits include:

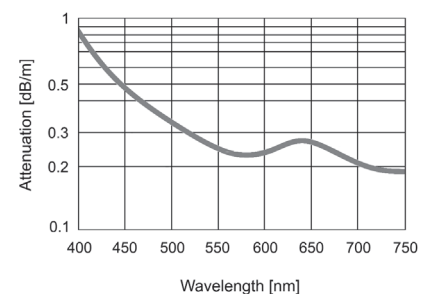
- Compliance with IEC's fire-retardant standard 60332-1-2
- Unique fused technology pioneered by SCHOTT
- Unmatched resistance to high temperatures, offering the greatest possible light intensity—without heat filters
- A UV-resistant common end for unrivalled longevity
- Flexible multi-fiber construction
- High packing density ensuring compatibility with tightly focused light sources
- Excellent light distribution, achieved through fine randomization
- High-quality SCHOTT glass fibers offering exceptional transmission and color characteristics
- Factory-terminated common end for superior quality, performance and longevity



The transmission of light versus tail length



Absorption of light, per meter of fiber, versus wavelength

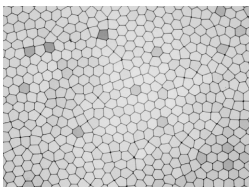


ORDERING INFORMATION

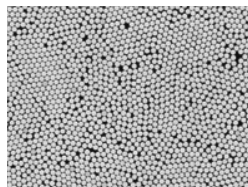
Subject to certain guidelines, SCHOTT can produce SpectraFlex-Excel harnesses to meet specific customer requirements. Harnesses can include different cable sizes and tail lengths.

When ordering, please note the maximum number of tails possible in a harness, as well as the maximum tail length.

Note: Tolerances apply to the tail length of fiber optic harnesses. Please contact SCHOTT for details.



Fused glass fiber bundle



Bonded glass fiber bundle

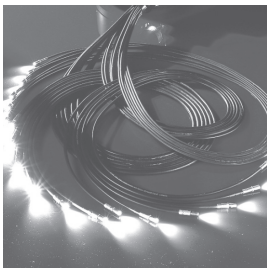
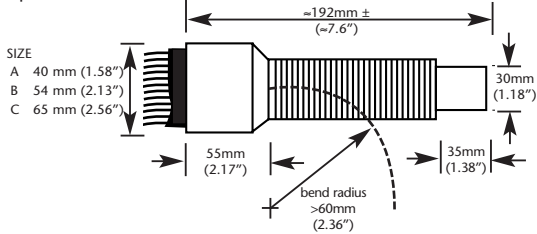
SCHOTT
glass made of ideas

Specifications

SIZE	Units	SIZE							
		0.75	1.5	3	8	14	18	24	36
Fiber bundle diam.	mm (in)	1.0 (0.04)	1.4 (0.06)	2.0 (0.08)	3.0 (0.12)	4.0 (0.16)	4.5 (0.18)	5.8 (0.24)	7.3 (0.29)
Outer diameter	mm	2.2 ±0.10	2.7 ±0.10	3.85 ±0.15	4.85 ±0.15	6.35 ±0.15	7.4 ±0.15	8.7 ±0.30	10.1 ±0.30
	(in)	(0.09) (±0.004)	(0.11) (±0.004)	(0.15) (±0.006)	(0.19) (±0.006)	(0.25) (±0.006)	(0.25) (±0.006)	(0.34) (±0.012)	(0.40) (±0.012)
Minimum bending radius	mm	5	8	15	20	25	40	50	60
	(in)	(0.20)	(0.31)	(0.59)	(0.79)	(0.98)	(1.58)	(1.97)	(2.36)
Maximum number of tails									
	Cap size A (40 mm)	130	81	40	23	15	12	9	7
	Cap size B (54 mm)	290	182	90	52	34	26	16	10
	Cap size C (65 mm)	465	265	130	59	-	27	-	-
Minimum number of tails		56	26	15	7	4	3	2	2
Randomized option		no	no	no	yes	yes	yes	yes	yes
Tail ferrule options		B1	B1.5	B2, F2	B3,G3, SG3,F3	B4,F4, G4	F4.5, G4.5,B4	F6	F7.3
Common end	30 mm fused technology harness								
Flex sheathing	HFFR compounds (halogen-free and flame-retardant)								
Operating temperature†	°C (°F)	Common end face		0 ... +350 (+32 ... +662)					
† Operation below dewpoint is not recommended.		Flexible tube		0 ... +150 (+32 ... +302)					
		Flex sheathing		0 ... +70 (+32 ... +158)					

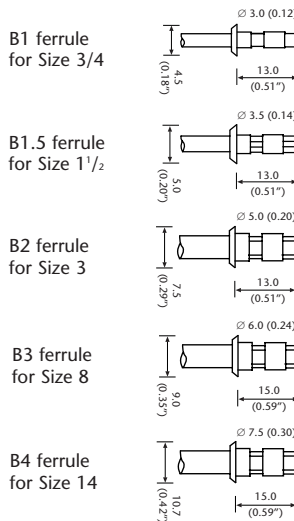
Special configurations upon request

SpectraFlex-Excel common end

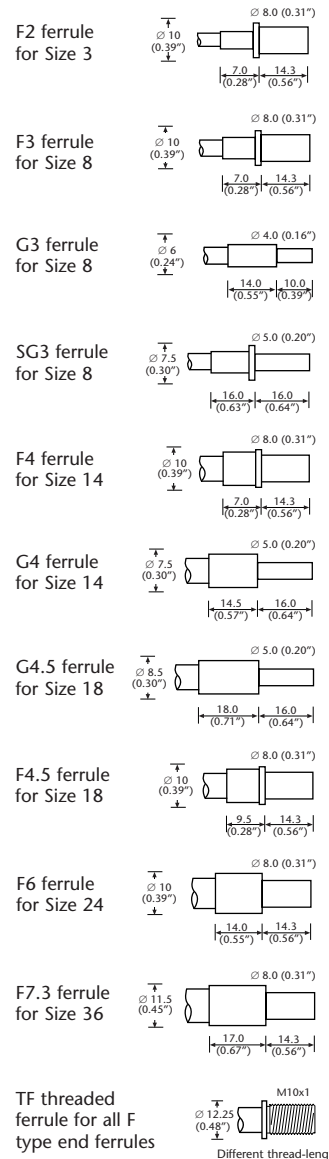


SpectraFlex® and SpectraFlex-Excel® are trademarks of SCHOTT AG.

End ferrules — decorative applications



End ferrules — lighting applications



For further information, please contact your local SCHOTT sales office.

Fiber Optics
SCHOTT AG
 Otto-Schott-Strasse 2
 55127 Mainz
 Germany
 Tel: +49 (0) 6131/66-0
 Fax: +49 (0) 6131/66-7846
 E-mail: fiberoptics.info@schott.com
www.schott.com/fiberoptics

Fiber Optics
SCHOTT North America, Inc.
 122 Charlton Street
 Southbridge
 MA 01550 USA
 Tel: +1 508 765 3235
 Fax: +1 508 764 7361
 E-mail: LSOinfo@us.schott.com
www.us.schott.com/fiberoptics

Fiber Optics
SCHOTT Nippon K.K.
 7 Honshio-cho
 Shinjuku-ku
 Tokyo 160-00 03 Japan
 Tel: +81 (0) 3/53 66-2548
 Fax: +81 (0) 3/33 58-2960
 E-mail: fiberoptics.tokyo@schott.com
www.schott.com/japan

In a continuing effort to offer the best product possible, SCHOTT reserves the right to change, without notice, specifications or materials that—in SCHOTT's opinion—will not alter the function of the product.

SCHOTT
 glass made of ideas