

SCHOTT LLS – LED Light Source

Longer Life, Lower Energy Consumption



The SCHOTT LLS offers several advantages over other types of fiber optic light sources used in machine vision applications, including:

- Long life-time (30.000 hours)
- Fits all COLDVision light guides
- Fast strobing capabilities (maximum 1 KHz pulse rate, maximum pulse width 1 msec, duty 1/10)
- Low power consumption (less than 15 watts)
- Immunity to vibration and shock
- Instantaneous switching
- Small footprint
- RoHS compliant
- CE and ELT approved
- The light output is optimized for 13 mm diameter light guide

Characteristics

Dimensions	Length 197 mm (7.75 in) Width 129 mm (5.08 in) Height 63 mm (2.48 in)
Weight	862 grams (1.9 lbs)
Operating Temperature	-20 °C (4 °F) to 40 °C (104 °F)
Color Temperature – White	6000 K

SCHOTT LLS Technical Information

Part Number	Color	Wavelength (nm) (bandwidth ± 20 nm)	Light Output from 13 mm light guide
A20950	Red	625	65 lm
A20950.1	White	–	130 lm
A20950.2	Green	525	100 lm
A20950.4	Blue	470	40 lm

Hybrid Solution pairs LEDs with Fiber Optics

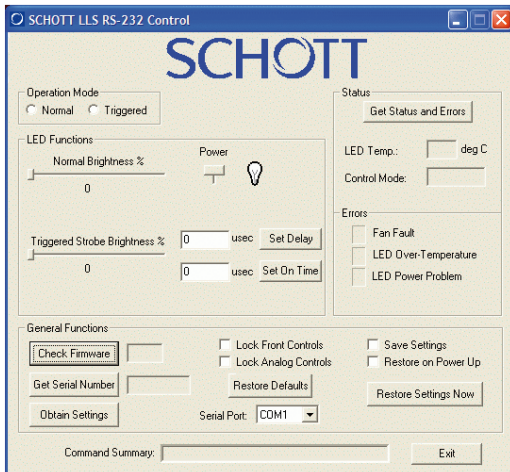
The LLS offers users 4 different types of control interfaces

- Continuous intensity control knob
- USB 2.0
- RS-232 or
- Analog 0–5 Volt

The auto-sensing inputs eliminate the need to switch manually between the models. The unit also features a user control lock-out via the USB and RS-232 controls.



Part number A20950



Screen shot of the RS-232 control



For more information please contact:

Fiber Optics

SCHOTT AG

Otto-Schott-Strasse 2

55127 Mainz

Germany

Phone: +49 (0)6131/66-7752

Fax: +49 (0)6131/66-7850

fiberoptics.info@schott.com

www.schott.com/fiberoptics

For your local sales contact please visit

www.schott.com/fiberoptics/english/contact

SCHOTT
glass made of ideas