



3" Lightline, A08903, with Holder, A08901, supported by an articulated arm, A08506, and base, A08507



Lightline Holder, A08901

Lightlines Support Apparatus

For accurate positioning in both industrial and laboratory environments.

Support Apparatus

Part No.	Description
A08901	Lightline holder with M6 thread. Will support 3" (76) to 10" (254) single lightlines when attached to an articulated arm and base.

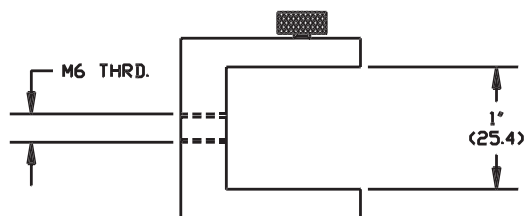
Lightline Support Apparatus

Dimensions in () are in mm

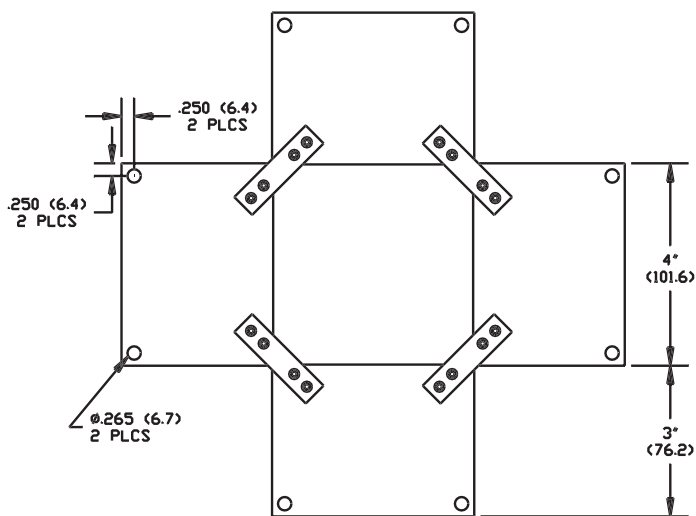
Product improvements may result in specification or feature changes without notice.

A08901

Holder



Quad Holder



Lighting and Imaging

SCHOTT AG

Otto-Schott-Str. 2

55127 Mainz

Germany

Phone: +49 (0) 6131/66-7752

Fax: +49 (0) 6131/66-7850

E-mail: lightingimaging@schott.com

www.schott.com/lightingimaging

SCHOTT
glass made of ideas