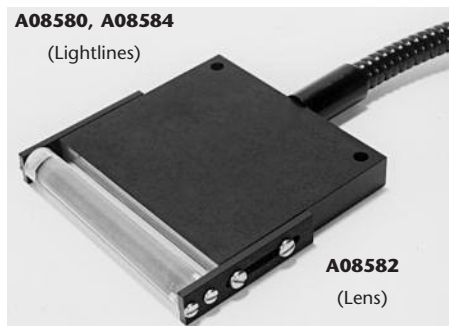


1" (25) Dual Lightline, A08579



One leg of Dual or Quad 3" (76) Lightline with Cylindrical Lens

1", 2" & 3" Lightlines

Alternative to a fiber optic bundle for more precise illumination in Microscopy and Inspection applications.

Features

- Small, uniform field of view.
- Narrow body design and offset position of the line on 1" (25) and 2" (51) bodies allows close positioning of the line against microscope slides (for darkfield affect).
- 3"(76)* models are calibrated with DDL-bulb to ± 8 gray scale levels at a mean of 200 with a gamma setting of 1.0 to deliver optimum uniformity (see chart). Uniformity of 1"(25) and 2"(51) lines is better than ± 8 gray scales. Refer to section 25.02.01 for more information on uniformity of fiber optic products.
- Standard input ferrule fits ColdVision Series light sources. Can also be used with strobes.
- Rugged aluminum body and light source ferrule with black anodized finish. PVC covered metal tubing protects the fiber bundle.
- M6 threads are provided on the 1"(25) and 2"(51) lightline bodies for easy mounting. See drawing on back.
- Lightline holders and support products available in Support Apparatus for Lightlines section of the product catalog.
- Custom lengths, bundle exits, multiple combinations (dual, quad, etc.) and line widths can be designed for your unique requirements. In addition, combine lightlines with other fiber optic components in a single input to create unique lighting effects. Lead-time required.
- Cylindrical and apertured lenses are available as standard products for most lightline models. They can be custom made for all models.

1", 2", & 3" Lightlines and Lenses

Part No.	Line Dimensions	Input Active	Gray Scale	Part No. for Lens	
	Length x Width	Fiber Dia.	Uniformity [^]	Cylindrical	Apertured
Single line configuration w/36" bundle length					
A08588	1" x .070" (25 x 1.8)*	.30" (7.6)	< ± 8	A08571	A08573
A08589	2" x .035" (51 x .89)	.30" (7.6)	< ± 8	A08572	A08574
Dual line configuration w/36" bundle length					
A08579	1" x .070" (25 x 1.8)	.43" (10.9)	< ± 8	A08571	A08573
A08583	2" x .035" (51 x .89)	.43" (10.9)	< ± 8	A08572	A08574
A08580	3" x .018" (76 X .46)	.36" (9.1)	± 8	A08582	Custom
Quad line configuration w/36" bundle length					
A08584	3" x .018" (76 X .46)	.51" (13.0)	± 8	A08582	Custom

[^] Gamma setting of 1.0

* Dimensions in () are in mm

1", 2" & 3" Lightlines

Dimensions in () are in mm

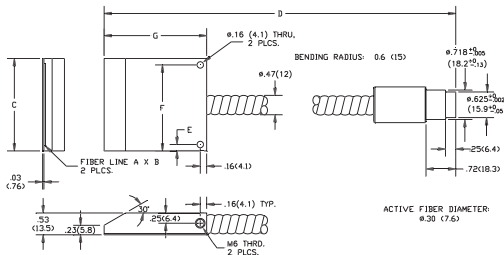
Product improvements may result in specification or feature changes without notice.

Input: Black Anodized Aluminum

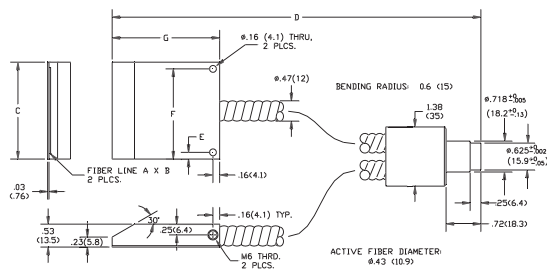
Body: Black Anodized Aluminum

Sheathing: PVC Covered Metal Tubing

Warning: This product is manufactured with glass fiber. Not for use in cable/hose carrier. Call SCHOTT to discuss moving cable/hose carrier applications.



A08588 & A08589
Single Lightlines



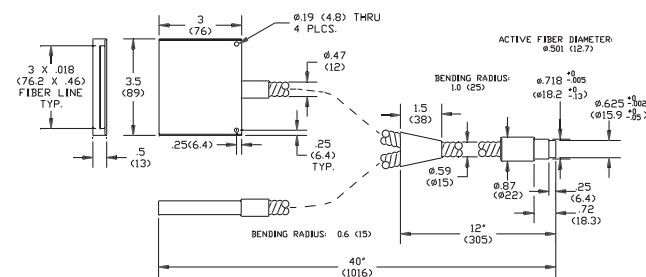
A08579 & A08583
Dual Lightlines

Matrix for A08588 & A08589 Lightlines

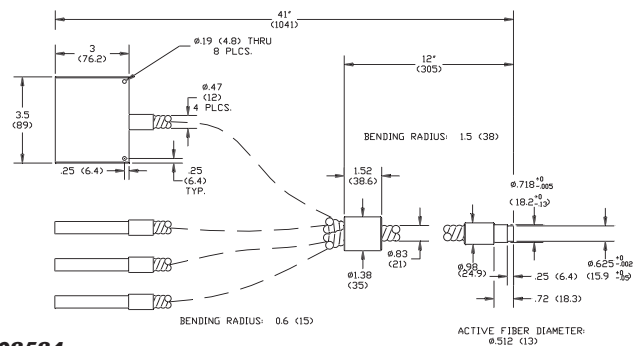
Part No.	A	B	C	D	E	F	G
A08588	1"(25)	.07"(1.8)	1.25"(31.8)	38"(965.2)	.16"(4.1)	1.1"(28)	2"(50.8)
A08589	2"(51)	.035"(.89)	2.25"(57.2)	38.5"(978)	.16"(4.1)	2.1"(53)	2.5"(63.5)

Matrix for A08579 & A08583 Lightlines

Part No.	A	B	C	D	E	F	G
A08579	1"(25)	.07"(1.8)	1.25"(31.8)	38"(965.2)	.16"(4.1)	1.1"(28)	2"(50.8)
A08583	2"(51)	.035"(.89)	2.25"(57.2)	38.5"(978)	.16"(4.1)	2.1"(53)	2.5"(63.5)



A08580
Dual Lightline



A08584
Quad Lightline

Lighting and Imaging

SCHOTT AG

Otto-Schott-Str. 2

55127 Mainz

Germany

Phone: +49 (0) 6131/66-7752

Fax: +49 (0) 6131/66-7850

E-mail: lightingimaging@schott.com

www.schott.com/lightingimaging

SCHOTT
glass made of ideas