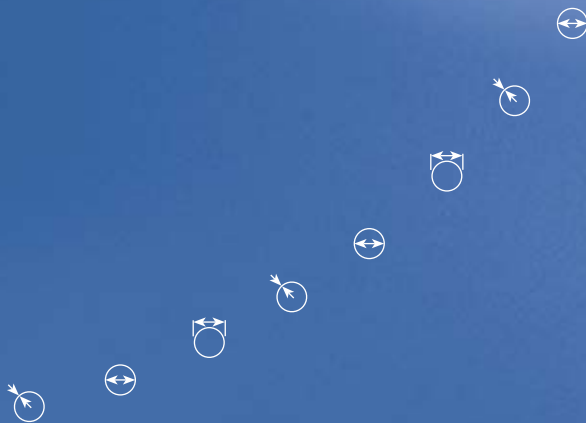




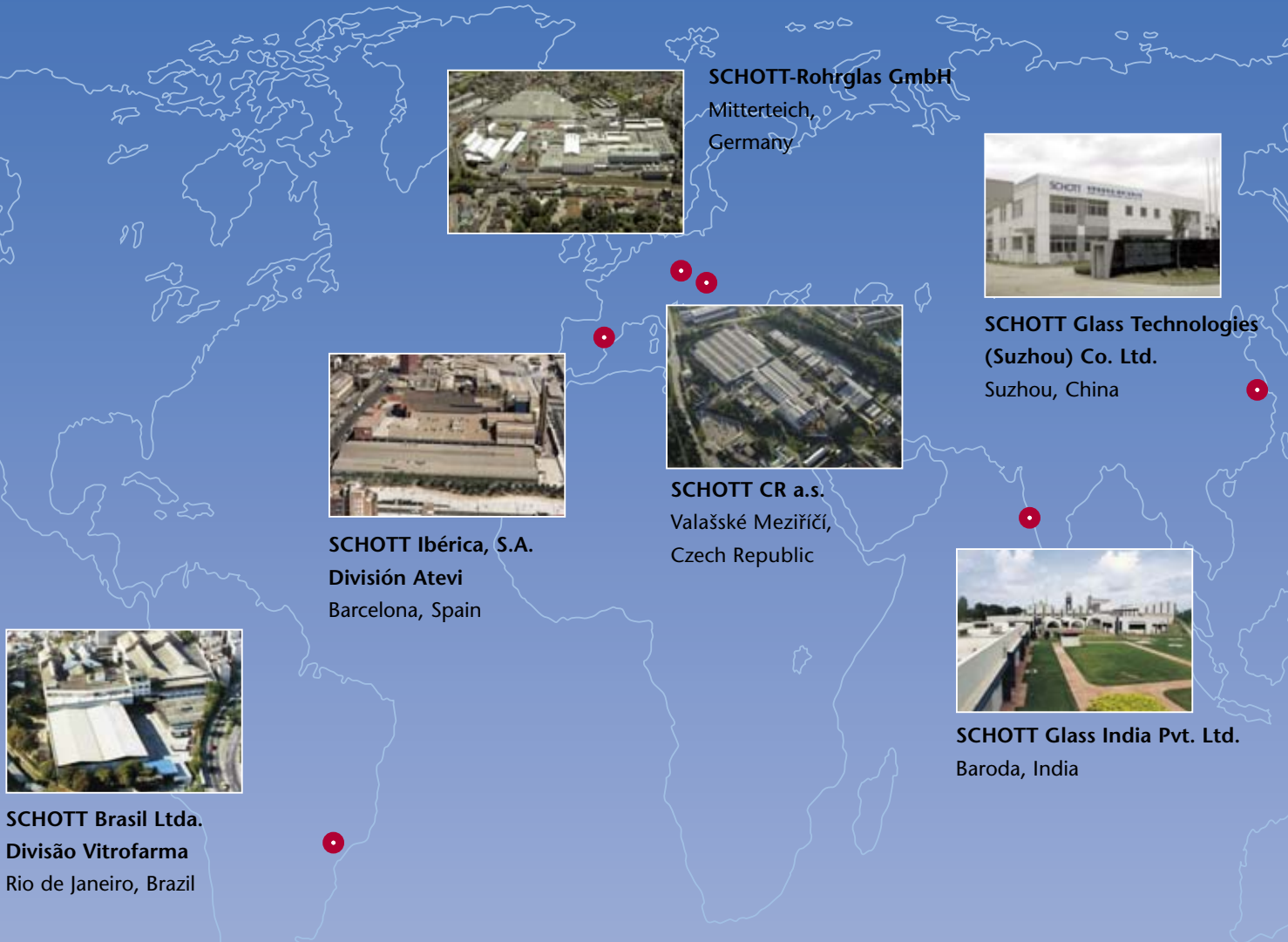
Glass Tubing around the world

Business Segment Tubing - SCHOTT Glass India



SCHOTT
glass made of ideas

A Network for Quality



SCHOTT-Rohrglas GmbH
Mitterteich,
Germany



**SCHOTT Glass Technologies
(Suzhou) Co. Ltd.**
Suzhou, China



SCHOTT Ibérica, S.A.
División Atevi
Barcelona, Spain



SCHOTT CR a.s.
Valašské Meziříčí,
Czech Republic



SCHOTT Glass India Pvt. Ltd.
Baroda, India



SCHOTT Brasil Ltda.
Divisão Vitrofarma
Rio de Janeiro, Brazil

The Business Segment Tubing of the SCHOTT Group extends to six manufacturing sites worldwide. With a production capacity in excess of 110,000 tons, the Business Segment Tubing is one of the world's leading manufacturers of glass tubing. Some 60 different types of glass, manufactured in a wide dimension range, are available to customers in just about every country in the world via an extensive sales network.

All manufacturing sites encompassed by the Business Segment Tubing rely on a common strategy in all areas of research and development, production, quality assurance, and logistics. The continuous technology transfer in progress between the various manufacturing sites has proved to be an unbeatable strategy for maintaining worldwide leadership in terms of technical know-how.

This is just one strategy among many to ensure that identical products will at all times meet identical high quality requirements on an international level. To cite just one example: pharmaceutical tubing made of FIOLAX®, BORO-8330™ or ILLAX® is offered worldwide according to the same technical terms of supply, regardless of the manufacturing location.

Baroda, India

Baroda is the domicile of SCHOTT Glass India's Tubing Division, since 1998 the youngest member of the Business Segment Tubing. Thanks to the implementation of an state-of-the-art technology and know-how transfer program, the Baroda site's entire production process was completely overhauled and modernized in no time at all.

By now, the quality standard achieved is setting milestones for pharmaceutical primary packaging materials throughout all of the local markets. To date, SCHOTT Glass India's Tubing Division is India's first and only glass tubing manufacturer with a quality management system certified by the German TÜV Rheinland in accordance with international standard ISO 9001:2000. This makes SCHOTT Glass India the first manufacturer to guarantee a constant high product quality level in the market of explicit technical specifications.

DENSOPACK®, the patented packaging system for pharmaceutical tubing developed by SCHOTT, ensures that all pharmaceutical tubing from Baroda will reach customer's destination without unnecessary damage and soiling.



Quality and Technology

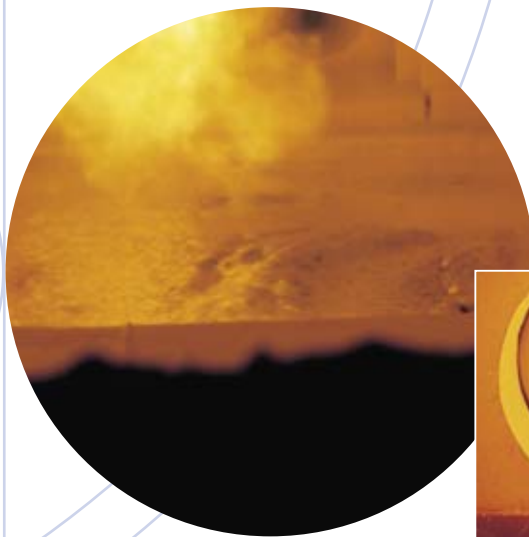


In addition to the 100% quality control integral to the manufacturing process, Baroda's quality assurance program also involves the continuous intensive visual and physical analysis of random samples.

Absolute precision is the indispensable ingredient required to produce tubing from glass reaching temperatures up to approx. 1,600°C, while at the same time maintaining supreme quality standards and keeping tolerances to a minimum in the tubing sent out to our customers. Well-founded know-how, highly-developed technology and ongoing process innovations are the guarantors for worldwide uniform quality standards for the same products.

Each product is subject to a rigid nonstop monitoring process - from the receipt of the raw materials all the way to the shipment of the finished goods. 100% checks using opto-electronic instruments ensure uninterrupted monitoring of the manufacturing process. All manufacturing sites of the SCHOTT Group's Business Segment Tubing are certified according to ISO 9001:2000 quality management system.

To meet the quality requirements of the local markets, the Baroda site produces glass tubing made of NGC (Neutral Glass Clear) and NGA (Neutral Glass Amber) in compliance with special Technical Terms of Supply (TLB SGI). The DENSOPACK® process developed by SCHOTT guarantees extremely sturdy and stress-resistant packaging.





The DENSOPACK[®] packaging solution is extremely sturdy and stress-resistant.



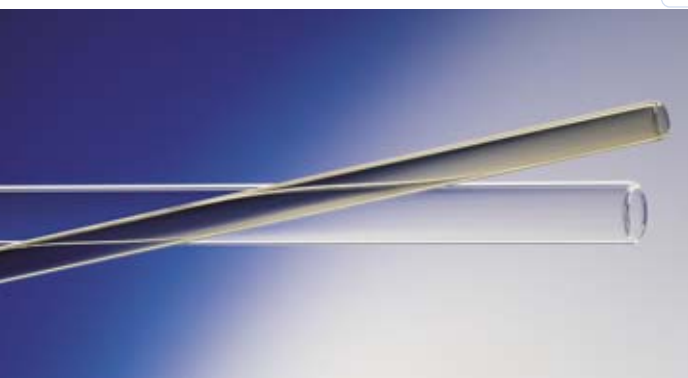


Our Glass – Your Ideas

Glass tubing is an absolutely essential and indispensable basis for products and applications in pharmaceuticals. It is the astounding variability of glass which makes this material so versatile: special glass offers tailor-made solutions to a myriad of specific tasks.

Upon customer request, our technically and scientifically trained experts will readily assist the customer in defining the quality requirements he seeks. As a special service provided on customer demand, we also conduct chemical and physical analyses and even examinations of entire process chains to ensure the best possible solution for any specific requirement.

Consistent and uncompromising process innovation, combined with in-house basic research in Mitterteich, Germany, also in collaboration with the customer, is a reliable guarantor for continuous quality optimization which allows technical terms of supply at consistently lowered tolerances.



SCHOTT Glass India Pvt. Ltd.

Tubing Division

2nd Floor, Sidcup Tower

Race Course

Baroda – 390007

India

Phone: +91 (0)265/233-4391/-6952

Fax: +91 (0)265/233-0982

E-Mail: pti-baroda@schott.com

www.schott.com/tubing

SCHOTT
glass made of ideas