

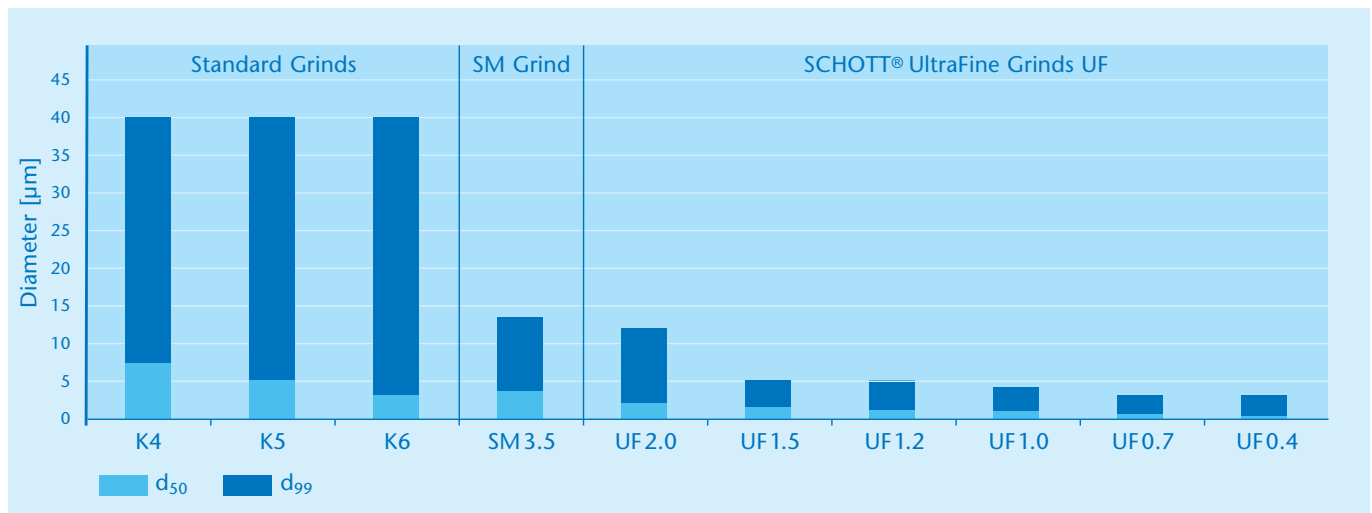
# SCHOTT® DentalGlass | Inert

## Grain Sizes

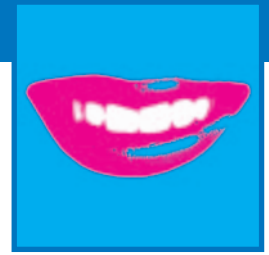
To allow you to create the perfect filler mix for your material we offer our glasses in a variety of grain sizes. All our inert dental glasses can be supplied to you in grain sizes down to 0.4  $\mu\text{m}$  ( $d_{50}$ ).

Type	Description	Size	Grain size		Approx. Surface [m <sup>2</sup> /g]
			$d_{50}$ [ $\mu\text{m}$ ]	$d_{99}$ [ $\mu\text{m}$ ]	
K	Standard grind	K1	$30 \pm 10$	$\leq 150$	-
		K2	$16 \pm 4$	$\leq 100$	-
		K3	$10 \pm 2$	$\leq 63$	-
		K4	$7 \pm 1$	$\leq 40$	-
		K5	$5 \pm 1$	$\leq 40$	0.5
		K6	$3 \pm 1$	$\leq 40$	0.6
SM	Special grind with narrow distribution	SM3.5	$3.5 \pm 1$	$\leq 13$	2
UF	Special grind with narrow distribution and extremely low abrasion level	UF2.0	$2.0 \pm 0.25$	$\leq 12$	3
		UF1.5	$1.5 \pm 0.25$	$\leq 5$	5
		UF1.2	$1.2 \pm 0.2$	$\leq 5$	7
		UF1.0	$1.0 \pm 0.2$	$\leq 4$	8
		UF0.7	$0.7 \pm 0.2$	$\leq 3$	13
		UF0.4	$0.4 \pm 0.1$	$\leq 3$	23

Grain size description  $d_{50}$  ( $d_{99}$ ): Equivalent diameter, for which the distribution sum has the value of 50% (99%).



Graphical display of  $d_{50}$  and  $d_{99}$



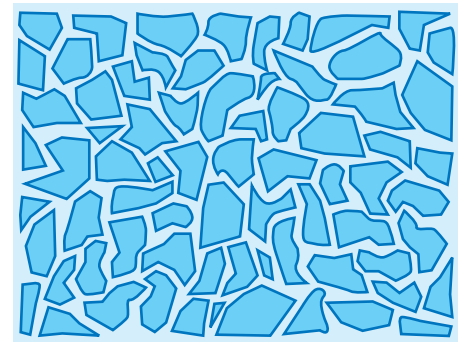
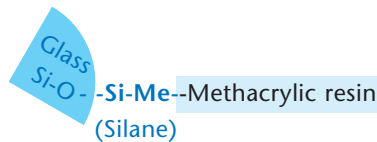
# SCHOTT® DentalGlass | Inert

## Grain Sizes

### Silanation – Our additional service for you:

As an additional service for you we offer to supply our inert dental glasses silanated. A silane layer will allow the bonding of the non-reactive dental glass to the resin components of your material.

**Silane:** Organic compound that chemically reacts with hydrophilic glass surface and makes it hydrophobic. The other end of the silane can chemically react with the hydrophobic resin.



### Grain sizes for Silanated Inert Dental Glasses

Type	Description	Size	Grain size		Silane addition [weight-%]
			d <sub>50</sub> [µm]	d <sub>99</sub> [µm]	
K sil	Standard grind	K5 0.5% Silane	5 ± 1	≤ 40	0.5
		K6 0.6% Silane	3 ± 1	≤ 40	0.6
SM sil	Special grind with narrow distribution, silanated	SM3.5 1.0% Silane	3.5 ± 1	≤ 13	1.0
UF sil	Special grind with narrow distribution and extremely low abrasion level, silanated	UF2.0 1.0% Silane	2.0 ± 0.25	≤ 12	1.0
		UF2.0 1.4% Silane	2.0 ± 0.25	≤ 12	1.4
		UF1.5 1.6% Silane	1.5 ± 0.25	≤ 5	1.6
		UF1.5 2.3% Silane	1.5 ± 0.25	≤ 5	2.3
		UF1.2 2.6% Silane	1.2 ± 0.2	≤ 5	2.6
		UF1.2 3.0% Silane	1.2 ± 0.2	≤ 5	3.0
		UF1.0 3.2% Silane	1.0 ± 0.2	≤ 4	3.2
		UF1.0 4.6% Silane	1.0 ± 0.2	≤ 4	4.6
		UF0.7 4.2% Silane	0.7 ± 0.2	≤ 3	4.2
		UF0.7 6.0% Silane	0.7 ± 0.2	≤ 3	6.0
		UF0.4 9.4% Silane	0.4 ± 0.1	≤ 3	9.4

The coupling agent used is  $\gamma$ -Methacryloxypropyl-tri-methoxy-Silane. Stated percentage of silane addition:  $x$  wt % of unhydrolised silane +  $(100-x)$  wt % of powder = 100 wt % of batch.

### For more information:

Special Glass Division of  
**SCHOTT Electronic Packaging GmbH**  
 Christoph-Dorner-Strasse 29  
 84028 Landshut  
 Germany

Phone: +49 (0)871/826-702  
 Fax: +49 (0)3641/28889-096  
 Sandra.Blomer@schott.com  
 www.schott.com/dentalglass

**SCHOTT**  
 glass made of ideas

No responsibility can be taken for the accuracy of this information. Despite the fact that all reasonable care was taken in presenting and keeping this information up to date, SCHOTT neither accepts legal responsibilities nor guarantees the completeness, accuracy and up-to-dateness of the information presented here. Date issued: August 2011