

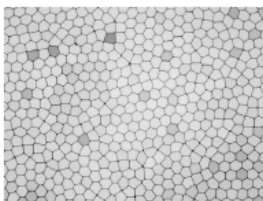
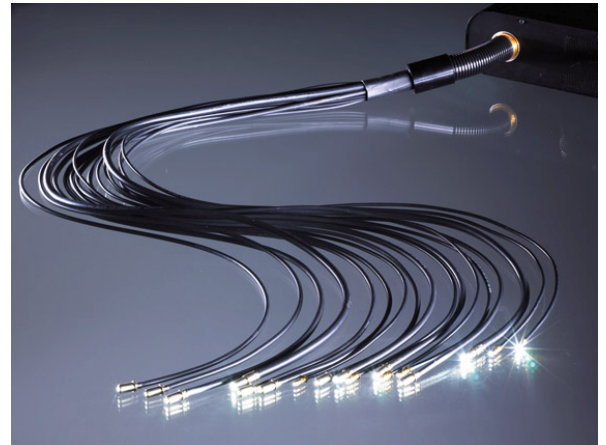
SCHOTT SpectraFlex®-Excel Glass Harnesses

Unique high-temperature resistant fiber optic harnesses

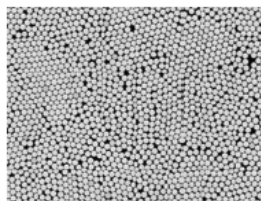
SpectraFlex-Excel represents a new generation of glass fiber optic harnesses from SCHOTT—offering unparalleled light output, outstanding longevity and extraordinary color characteristics.

Product benefits include:

- Compliance with IEC's fire-retardant standard 60332-1-2
- Unique fused technology pioneered by SCHOTT
- Unmatched resistance to high temperatures, offering the greatest possible light intensity—without heat filters
- A UV-resistant common end for unrivalled longevity
- Flexible multi-fiber construction
- High packing density ensuring compatibility with tightly focused light sources
- Excellent light distribution, achieved through fine randomization
- High-quality SCHOTT glass fibers offering exceptional transmission and color characteristics
- Factory-terminated common end for superior quality, performance and longevity



Fused glass fiber bundle



Bonded glass fiber bundle

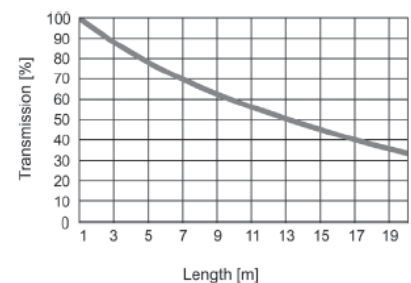
Ordering information

Subject to certain guidelines, SCHOTT can produce SpectraFlex harnesses to meet specific customer requirements. Harnesses can include different cable sizes and tail lengths.

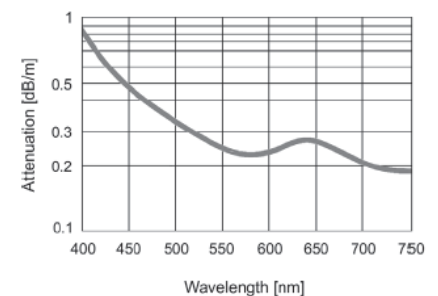
Note: Tolerances apply to the tail length of fiber optic harnesses. Please contact SCHOTT for details

Please configure and order your SpectraFlex Excel harness over E-Commerce, Schott's online order and service portal, or contact your local sales office:
www.schott.com/lightingimaging

The transmission of light versus tail length



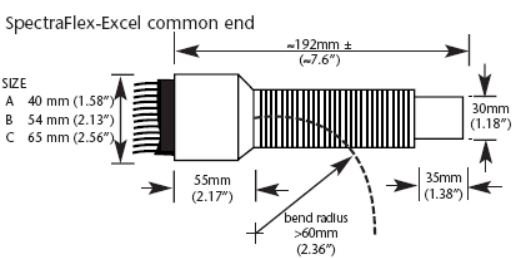
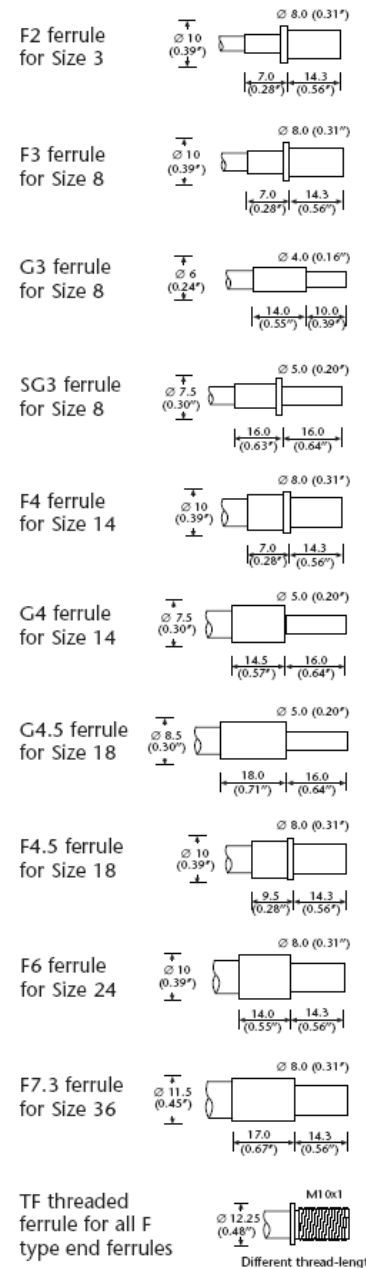
Absorption of light, per meter of fiber, versus wavelength



SCHOTT
glass made of ideas

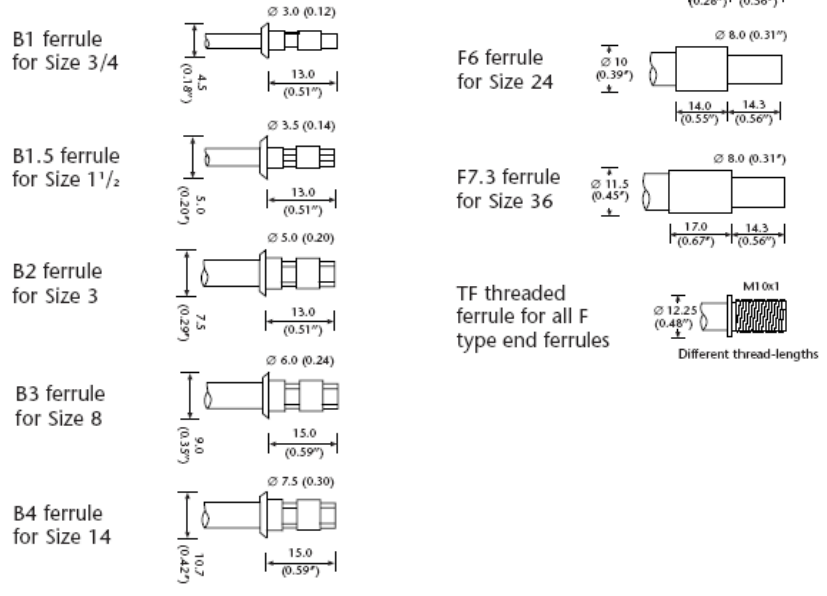
Specifications									
Units		Size							
Size		0.75	1.5	3	8	14	18	24	36
Fiber bundle diameter	mm (in)	1.0 (0.04)	1.4 (0.06)	2.0 (0.08)	3.0 (0.12)	4.0 (0.16)	4.5 (0.18)	5.8 (0.24)	7.3 (0.29)
Outer diameter	mm	2.2	2.7	3.85	4.85	6.35	7.4	8.7	10.1
	(in)	± 0.10 (± 0.004)	± 0.10 (± 0.004)	± 0.15 (± 0.006)	± 0.15 (± 0.006)	± 0.15 (± 0.006)	± 0.15 (± 0.006)	± 0.15 (± 0.012)	± 0.30 (± 0.012)
Minimum bending radius	mm (in)	5 (0.20)	8 (0.31)	15 (0.59)	20 (0.79)	25 (0.98)	40 (1.58)	50 (1.97)	60 (2.36)
Maximum number of tails	Cap size A (40 mm)	130	81	40	23	15	12	9	7
	B (54 mm)	290	182	90	52	34	26	16	10
	C (65 mm)	465	265	130	59	-	27	-	-
Minimum number of tails		56	26	15	7	4	3	2	2
Randomized option		yes	yes	yes	yes	yes	yes	yes	yes
Tail ferrule options		B1	B1.5	B2, F2	B3, G3, SG3, F3	B4, F4, G4	F4.5, G4.5, B4	F6	F7.3
Common end		30mm fused technology harness							
Flex sheathing		HFFR compounds (halogen-free and flame-retardant)							
Operation Temperature*	°C (°F)	Common end face 0...+350 (+32...+662) Flexible tube 0...+150 (+32...+302) Flex sheathing 0...+70 (+32...+158)							
*operation below dewpoint is not recommended									

End ferrules — lighting applications



SpectraFlex® and SpectraFlex-Excel® are trademarks of SCHOTT AG.

End ferrules — decorative applications



For further information please contact your local sales office:

Lighting and Imaging
SCHOTT AG
 Otto-Schott-Str. 2
 55127 Mainz
 Germany
 Tel.: +49 (0) 6131/66-0
 Fax: +49 (0) 6131/66-7846
 lightingimaging.info@schott.com
 www.schott.com/lightingimaging

Lighting and Imaging
SCHOTT Nippon K. K.
 7 Honshio-cho
 Shinjuku-ku
 Tokyo 160-00 03, Japan
 Tel.: +81 (0) 3/53 66-2548
 Fax: +81 (0) 3/33 58-2960
 lightingimaging.tokyo@schott.com
 www.schott.com/japan

Lighting and Imaging
SCHOTT North America, Inc.
 122 Charlton Street
 Southbridge
 MA 01550, USA
 Tel.: +1 508 765 3235
 Fax: +1 508 764 7361
 LSOinfo@us.schott.com
 www.us.schott.com/lightingimaging



In a continuing effort to offer the best product possible, SCHOTT reserves the right to change, without notice, specifications or materials that – in SCHOTT – opinion will not alter the function of the product.