

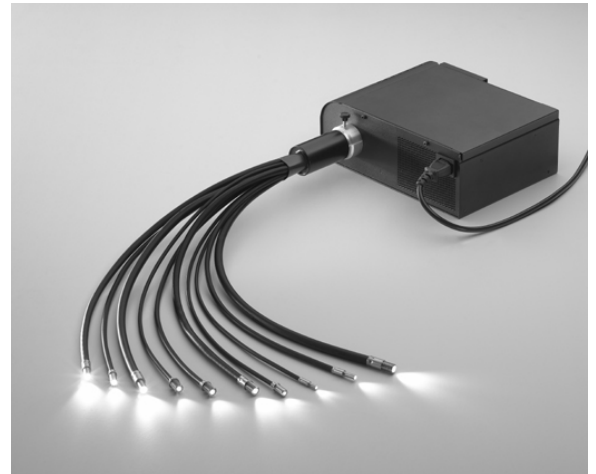
SCHOTT SpectraFlex® Glass Harnesses

High-quality end-emitting glass fiber optic harnesses

SCHOTT designed its SpectraFlex glass fiber optic harnesses with a number of

outstanding user benefits, including:

- Compliance with IEC's fire-retardant standard 60332-1-2
- Excellent color characteristics and light transmission
- Electrical safety for worry-free performance
- Excellent flexibility due to a multi-fiber construction
- Unrivalled longevity
- High-quality SCHOTT glass fibers
- Factory-terminated common end for superior quality, performance and longevity



Ordering information

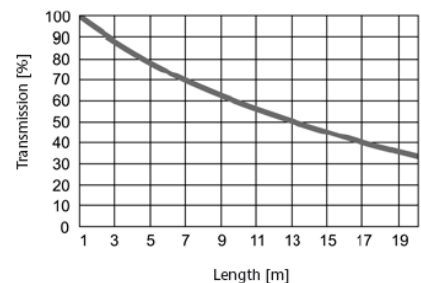
Subject to certain guidelines, SCHOTT can produce SpectraFlex harnesses to meet specific customer requirements. Harnesses can include different cable sizes and tail lengths.

Mixed SCHOTT tails – e. g. SpectraFlex and SpectraStream – of different sizes can be included in a single harness. These special SCHOTT harnesses can be configured online.

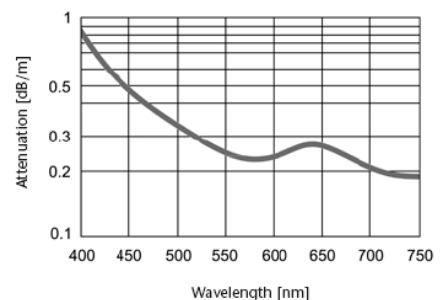
Note: Tolerances apply to the tail length of fiber optic harnesses. Please contact SCHOTT for details

Please configure and order your SpectraFlex harness over E-Commerce, Schott's online order and service portal, or contact your local sales office: www.schott.com/lightingimaging

The transmission of light versus tail length



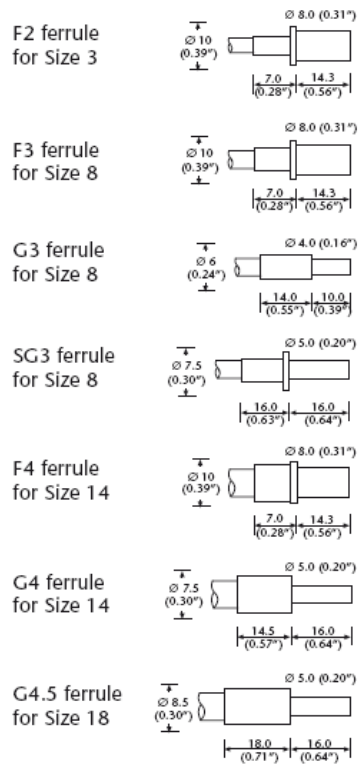
Absorption of light, per meter of fiber, versus wavelength



SCHOTT
glass made of ideas

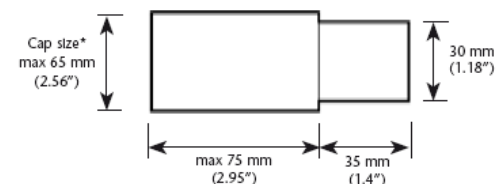
| Specifications | | | | | | | | | |
|-------------------------|--------------------|---|------------------|------------------|------------------|------------------|------------------|------------------|------------------|
| Units | | Size | | | | | | | |
| Size | | 0.75 | 1.5 | 3 | 8 | 14 | 18 | 24 | 36 |
| Fiber bundle diameter | mm (in) | 1.0 (0.04) | 1.5 (0.06) | 2.0 (0.08) | 3.0 (0.12) | 4.0 (0.16) | 4.5 (0.18) | 5.8 (0.23) | 7.3 (0.29) |
| Outer diameter | mm | 2.2 | 2.7 | 3.85 | 4.85 | 6.35 | 7.4 | 8.7 | 10.1 |
| | (in) | ± 0.10 (± 0.004) | ± 0.10 (± 0.004) | ± 0.15 (± 0.006) | ± 0.15 (± 0.006) | ± 0.15 (± 0.006) | ± 0.15 (± 0.006) | ± 0.30 (± 0.012) | ± 0.30 (± 0.012) |
| Minimum bending radius | mm (in) | 5 (0.20) | 8 (0.31) | 15 (0.59) | 20 (0.79) | 25 (0.98) | 40 (1.58) | 50 (1.97) | 60 (2.36) |
| Maximum number of tails | Cap size A (40 mm) | 130 | 81 | 40 | 23 | 15 | 12 | 9 | 7 |
| | B (54 mm) | 290 | 182 | 90 | 52 | 34 | 26 | 16 | 10 |
| | C (65 mm) | 465 | 265 | 130 | 59 | - | 27 | - | - |
| Randomized option | | yes | yes | yes | yes | yes | yes | yes | yes |
| Tail ferrule options | | B1 | B1.5 | B2, F2 | B3, G3, SG3, F3 | B4, F4, G4 | F4.5, G4.5, B4 | F6 | F7.3 |
| Common end | | S30 | | | | | | | |
| sheathing | | HFFR compounds (halogen-free and flame-retardant) | | | | | | | |
| Operation temperature | °C (°F) | -20...+80 (+4...+176) | | | | | | | |

End ferrules – lighting applications



Special configurations upon request

Common end S30

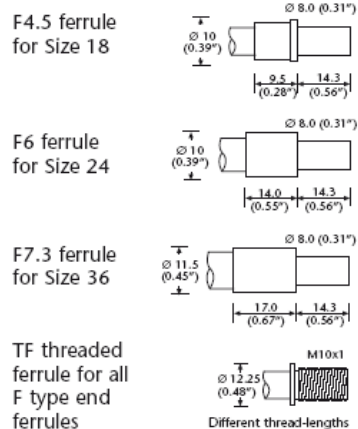
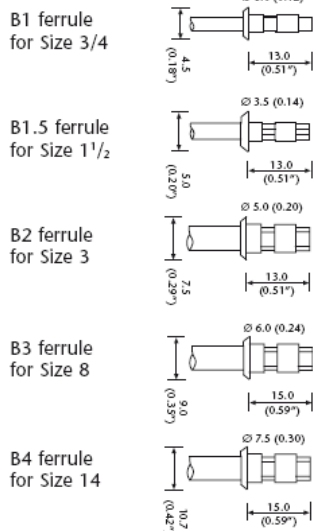


* See "maximum number of tails, unrandomized" in table above.



SpectraFlex® is a registered trademark of SCHOTT AG.

End ferrules – decorative applications



For further information please contact your local sales office:

Lighting and Imaging
SCHOTT AG
 Otto-Schott-Str. 2
 55127 Mainz
 Germany
 Tel.: +49 (0) 6131/66-0
 Fax: +49 (0) 6131/66-7846
 lightingimaging.info@schott.com
 www.schott.com/lightingimaging

Lighting and Imaging
SCHOTT Nippon K. K.
 7 Honshio-cho
 Shinjuku-ku
 Tokyo 160-00 03, Japan
 Tel.: +81 (0) 3/53 66-2548
 Fax: +81 (0) 3/33 58-2960
 lightingimaging.tokyo@schott.com
 www.schott.com/japan

Lighting and Imaging
SCHOTT North America, Inc.
 122 Charlton Street
 Southbridge
 MA 01550, USA
 Tel.: +1 508 765 3235
 Fax: +1 508 764 7361
 LSOinfo@us.schott.com
 www.us.schott.com/lightingimaging

SCHOTT
 glass made of ideas

In a continuing effort to offer the best product possible, SCHOTT reserves the right to change, without notice, specifications or materials that – in SCHOTT – opinion will not alter the function of the product.