

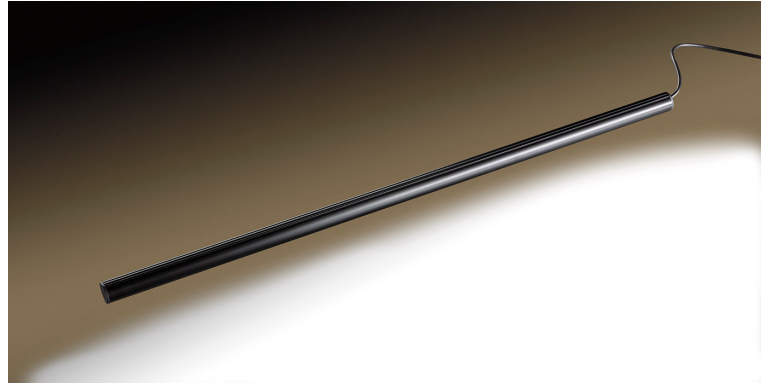
# SCHOTT LED SpectraTrue

## True colors and high light output

SCHOTT's unrivalled innovation combines premium technologies regarding light quality and temperature management with very attractive design.

The SpectraTrue high CRI LED lightbar provides a true color light output for high end showcase illumination. Outstanding heat management and low UV and IR emission protect valuable objects and sensitive products.

- Safe light
- High CRI white LEDs
- Slim profile
- Low cost of ownership/power consumption
- Outstanding thermal management
- Long lifetime
- Dimmable
- CE approved
- Colors available: black and silver
- Homogeneous light distribution
- ROHS conform. WEEE-Reg.-No.DE 14542729

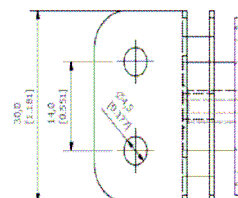
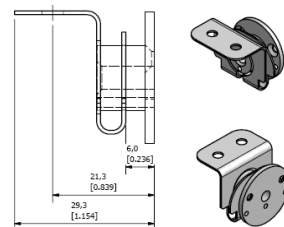


Specifications	Unit	SpectraTrue length											
		154	304	454	604	754	904	1054	1204	1354	1504	1654	1804
Profile length	mm	154	304	454	604	754	904	1054	1204	1354	1504	1654	1804
Profile length	inch	6.6	12	17.9	23.8	29.7	35.6	41.5	47.4	53.3	59.2	65.1	71
Profile diameter	mm (in)	20 (0,79)											
Typical Illuminance (at 500 mm distance)	lux	64	121	175	212	258	267	295	320	329	333	335	338
Typical Illuminance (at 19.7 inch distance)	ftcd	6	11.2	16	19.6	23.8	24.7	27.3	29.6	30.4	30.8	30.9	31.3
Typical Power consumption	W	1.5	3	4.5	6	7.5	9	10.5	12	13.5	15	16.5	18
Color temperature	K	3000 +/- 200											
Color Rendering Index		> 92											
Typical Full viewing angle	°	60											
Pitch between LEDs	mm (in)	50 (2)											
Operating temperature	°C (°F)	-40 (-40)...+40 (+105)											
Temperature Increase at housing (in operation)	°C	≤10											
Lifetime	h	≥ 50,000											
Certification		CE (EN 60598)											

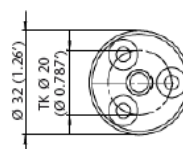
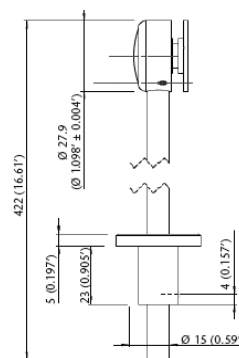
## Ordering Information.

Choose the length and color of SpectraTrue you would like for the following table.

SpectraTrue	Length mm (in)	Order No.	Length mm (in)	Order No.
silver	154 (6.6)	1212620	1054 (41.5)	1212696
black		1212602		1212613
silver	304 (12)	1212622	1204(47.4)	1212697
black		1212606		1212614
silver	454 (17.9)	1212624	1354 (53.3)	1212699
black		1212608		1212615
silver	604 (23.8)	1212625	1504 (59.2)	1212702
black		1212609		1212616
silver	754 (29.7)	1212682	1654 (65.1)	1212704
black		1212610		1212617
silver	904 (39.6)	1212684	1804 (71)	1212706
black		1212611		1212619



Mounting brackets



Mounting posts

Accessories	Order No.	Accessories	Order No.
Posts, silver	1167270	Bracket silver	1216783
Posts, black	1167272	Bracket black	1204072
Junction box	1173744	Mains lead US	6096729
Mains lead EU	6096722	Mains lead UK	6096740

Power supplies can be chosen from the table below depending on the length of the SpectraTrue, power supplies can power more than one bar. Please choose the mains lead required from the list above.

Power Supply	Order No.	SpectraTrue length / number of units per power supply											
		154	304	454	604	754	904	1054	1204	1354	1504	1654	1804
25 W	1209067	14	7	4	3	2	2	2	1	1	1	1	1
60 W	1209068	38	18	12	9	7	6	5	4	4	3	3	3
100 W	1209069	65	30	20	15	12	10	9	7	7	6	5	5
Dimmers	Order No.	SpectraTrue length / number of units per dimmer											
		154	304	454	604	754	904	1054	1204	1354	1504	1654	1804
Single	1213299	1	1	1	1	1	1	1	1	1	1	1	1
Multiple*	Coming soon	18	9	6	6	6	6	3	3	3	3	3	3

\*With the multiple dimmer up to 18 SpectraTrues can be dimmed simultaneously from one controller, or each SpectraTrue individually with the single dimmer.

For further information please contact your local sales office:

Lighting and Imaging  
**SCHOTT AG**  
 Otto-Schott-Str. 2  
 55127 Mainz  
 Germany  
 Tel.: +49 (0) 6131/66-0  
 Fax: +49 (0) 6131/66-7846  
 lightingimaging.info@schott.com  
 www.schott.com/lightingimaging

Lighting and Imaging  
**SCHOTT Nippon K. K.**  
 7 Honshio-cho  
 Shinjuku-ku  
 Tokyo 160-00 03, Japan  
 Tel.: +81 (0) 3/53 66-2548  
 Fax: +81 (0) 3/33 58-2960  
 lightingimaging.tokyo@schott.com  
 www.schott.com/japan

Lighting and Imaging  
**SCHOTT North America, Inc.**  
 122 Charlton Street  
 Southbridge  
 MA 01550, USA  
 Tel.: +1 508 765 3235  
 Fax: +1 508 764 7361  
 LSOinfo@us.schott.com  
 www.us.schott.com/lightingimaging

**SCHOTT**  
 glass made of ideas

In a continuing effort to offer the best product possible, SCHOTT reserves the right to change, without notice, specifications or materials that – in SCHOTT – opinion will not alter the function of the product.