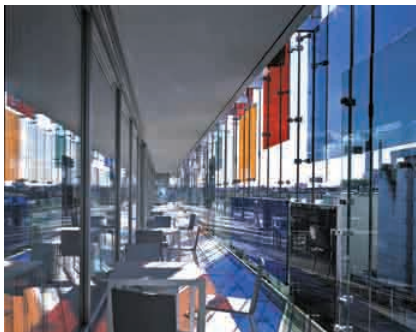


Design-oriented colored glass

Attractive accents for architecture



SCHOTT
glass made of ideas



Colored glass from SCHOTT opens up new perspectives for creating the link between functionality and aesthetics. The glazing itself offers potential for making decorating decisions.



Proper lighting contributes considerably towards ensuring that we feel comfortable inside rooms.



OPALIKA® can be used to achieve diffuse light that is nearly shadowless and closely resembles the sky light. Unlike the spotlights OPALIKA® distributes light evenly and, thus, instills a more comfortable feeling. For this reason, OPALIKA® is perfectly suited for use in illuminated ceilings, decorative light fixtures or backlit partitions.

Design-oriented colored glass

Creative possibilities for architects

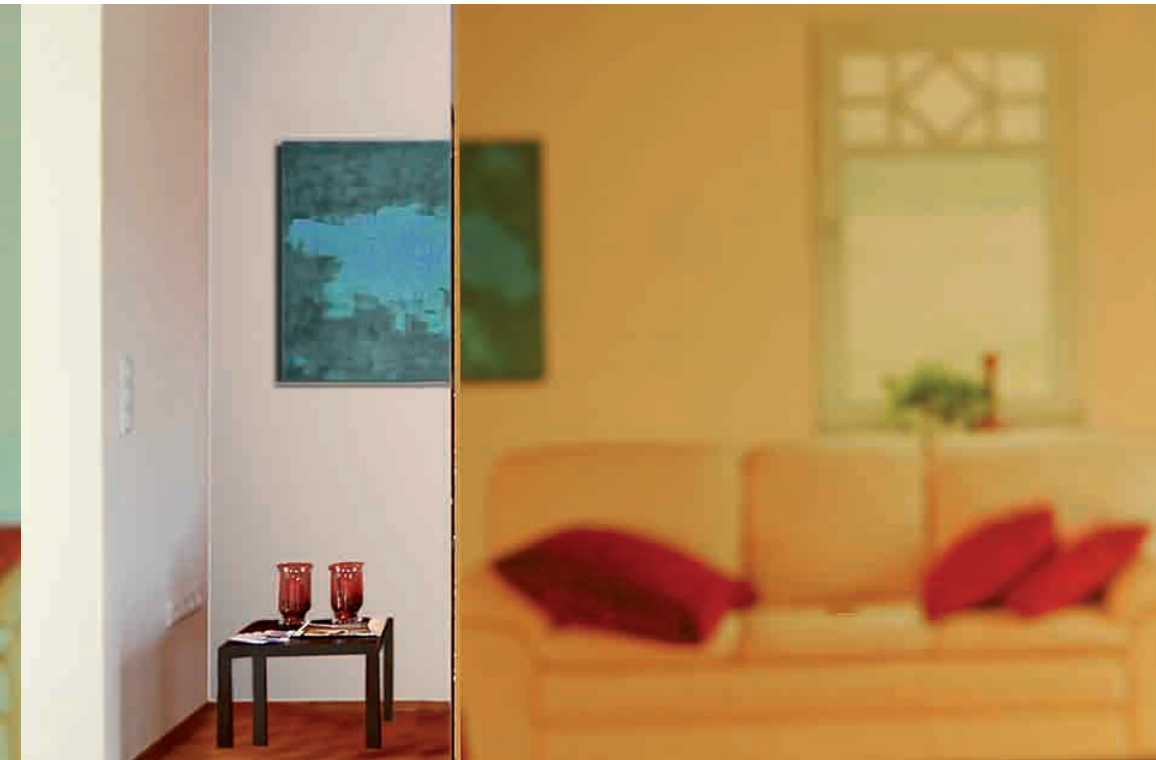
Colored glasses are becoming more and more popular as a design tool in architecture. Here, the surface generally determines the area of application. Whether for interior use, such as furniture and door glazing, partitions or shower cabinets or outdoors in facades, colored glass creates the perfect atmosphere. In fact, the glazing itself offers potential for making decorating decisions.

This makes it possible to set attractive colorful accents, particularly in commercial buildings.

Tempered safety glass is generally used in architecture to increase the mechanical resistance and lower the risk of injury in the event of glass breakage.

By offering an extended selection of colors in thicknesses from 5 mm to 10 mm, SCHOTT takes these demands into consideration.





IMERA is a non-textured, body-tinted Foucault Glas with a fire-polished surface that can be processed in the same way as conventional glass. For this reason, IMERA is not only suited for use in colored glass applications involving larger surface areas, but also in architecture, where it offers a variety of different ways to create designs and set attractive colorful accents - both indoors and outside.



IMERA yellow 7272 light



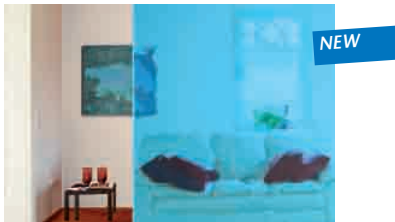
ARTISTA® amethyst 9150 medium



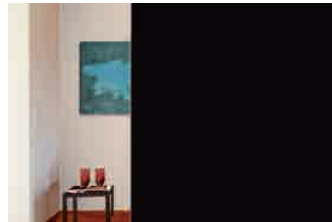
IMERA green 5672 light



OPALIKA®



IMERA blue 4364 light



Black Glass



IMERA blue 4218 dark

With glasses used in architecture, the demand for colored glasses in greater thicknesses continues to grow. Thanks to three additional specialized glasses that are now being

offered under IMERA in a thickness of 6 mm, a the following colored glasses are available today for use in architecture:

Color	Nominal thickness* in mm	Dimensions (l x w)** in mm x mm
IMERA yellow 7272 light	6.0	2,400 x 1,500
IMERA green 5672 light	6.0	2,400 x 1,500
IMERA blue 4364 light	6.0	2,400 x 1,500
IMERA blue 4218 dark	5.0	2,100 x 1,500
IMERA blue 4218 dark	8.0	2,400 x 1,500
ARTISTA® amethyst 9150 medium	10.0	2,100 x 1,500
Black Glass	6.0 and 8.0	1,760 x 800
OPALIKA®	5.5	2,400 x 1,600
OPALIKA®	8.0	2,100 x 1,500

Processing, such as cutting, thermal tempering, laminating, blanking and bending, are offered by the plant.

*) Tolerance +/- 0.50 mm

**) Due the production process, the lengths specified for the panels may vary by +/- 25 mm and the widths by +100 mm / -200 mm.

Advanced Materials
SCHOTT AG
Hüttenstr. 1
31073 Grünenplan
Germany

Fon: +49 (0) 5187/771-544
Fax: +49 (0) 3641/2847-443
info.coloredglass@schott.com
www.schott.com/architecture

SCHOTT
glass made of ideas

No responsibility can be taken for the accuracy of this information. Despite the fact that all reasonable care was taken in presenting and keeping this information up to date, SCHOTT neither accepts legal responsibilities nor guarantees the completeness, accuracy and up-to-dateness of the information presented here.