

# IMERA®

## Product Information

IMERA® is a colored flat glass with a non-textured surface.

## Product Advantages

IMERA® is a non-textured, body-tinted flat glass with a fire-polished surface that can be processed in the same ways as conventional glass. For this reason, IMERA® is not only suited for use in colored glass applications involving large areas, but also in architecture, both indoors and out, where it offers many individual ways of creating designs and setting accents with the use of attractive colors. IMERA® can be processed into both laminated safety glass and insulated glass. It can also be thermally tempered into tempered safety glass in 5 mm and 8 mm thicknesses.

## Applications

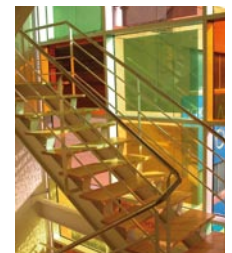
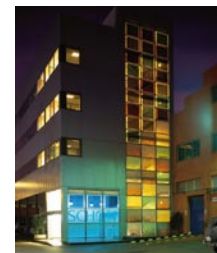
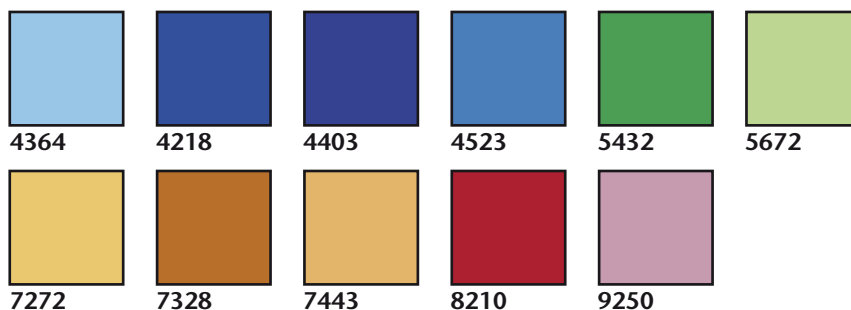
IMERA® is also suitable for use in furniture, doors (as all-glass doors or as light openings), as dividing walls, for facade cladding, or as railing elements.

## Materials

Nominal thickness in mm	Tolerance in mm	Color (Color-Characteristic)	Dimensions (length x width) in mm x mm
2.75	± 0.25	all colors except 8210	1000 x 1500 1600 x 1500
2.75	± 0.25	8210	1000 x 1500
5.00	± 0.50	4218 <sup>1)</sup>	2100 x 1500
8.00	± 0.50	4218 <sup>1)</sup>	2400 x 1500
3.15	± 0.35	–	1810 x 800
3.75	± 0.25	–	1810 x 800
6.00	± 0.50	–	1760 x 800
8.00	± 0.50	–	1760 x 800

1) As the thickness of the glass increases, the transmittance declines; the visual impression of the color is darker than the color presented.

## Colors



## Supply modalities

Available from glass wholesalers as stock sheets or from furniture and lighting industry vendors as finished glass.

**NOTE:** 6 mm Imera glass is now available in 3 new colours: yellow, blue and green.

For further information please contact:

Advanced Materials  
**SCHOTT AG**  
 Hüttenstrasse 1  
 31073 Grünenplan  
 Germany

Phone: +49 (0)5187/771-544  
 Fax: +49 (0)3641/2847-443  
 frank.albrecht@schott.com  
 www.schott.com/advanced\_materials

**SCHOTT**  
 glass made of ideas